

Steel/inox roller telescopic slides TLAZ, TLAX, TQAZ, TQAX

The TLAZ and TQAZ slides are made from robust rolled steel profiles and precision bearings, for smooth and precise movement along with interesting load capacities. The TLAZ comes with an intermediate element to offer higher load capacities than the TQAZ for the medium/longer stroke versions.

These slides represent T RACE's most economical telescopic slides, but nothing compared with cheap furniture drawer-slides, based on ball-cage movement. The slides are for application where TLS/TSQ/TLR/TQL28 can't meet the target price or where commercial drawer slides can't meet the requested quality and smooth movement.

The slides are available in standard steel version and complete INOX versions: TLAX, TQAX. The INOX versions offer same performance as standard and with same dimensions.

The slides offer a stroke equal to the length of the slide. The roller bearings are with 2Z seals and lubed for life. Thanks to high temperature

grease, the TLAZ and TQAZ are also suitable for application with constant temperature of 170° celcius

The slides comes all with strong damping rubber end-stops , which together with the rolling movement assure very silent function.

Roller telescopic slides TLAX, TQAX

Same dimensions and performance as standard version. All components is INOX. The roller bearings have 2RS seal and lubed for life with grease for alimentary and low temperature applications. Ideal slides for use in medical, chemical, alimentary industries, or in high corrosive ambients as marine equipment also for clean room usage, as very low emission of particles.

The slides can easily be washed, due to its open construction.

TLAZ, TLAX

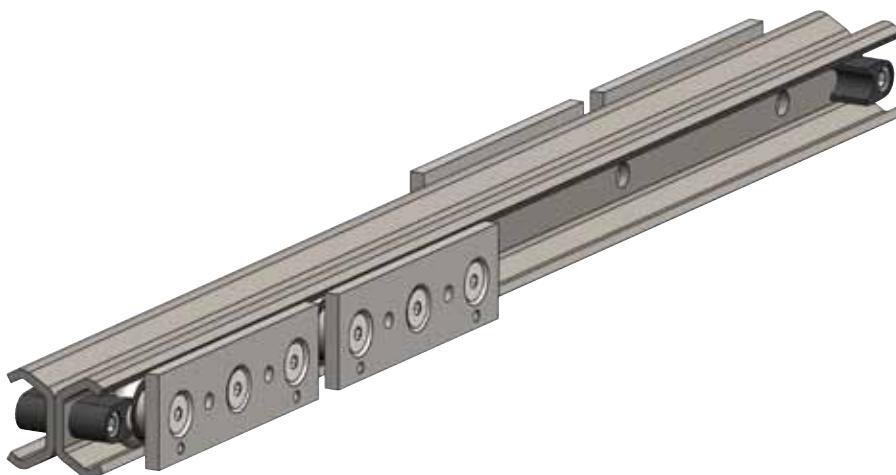
The TLAZ, TLAX slides have vertical intermediate element to provide good load capacities. Designed for installation at the sides of mobile part for horizontal extension.



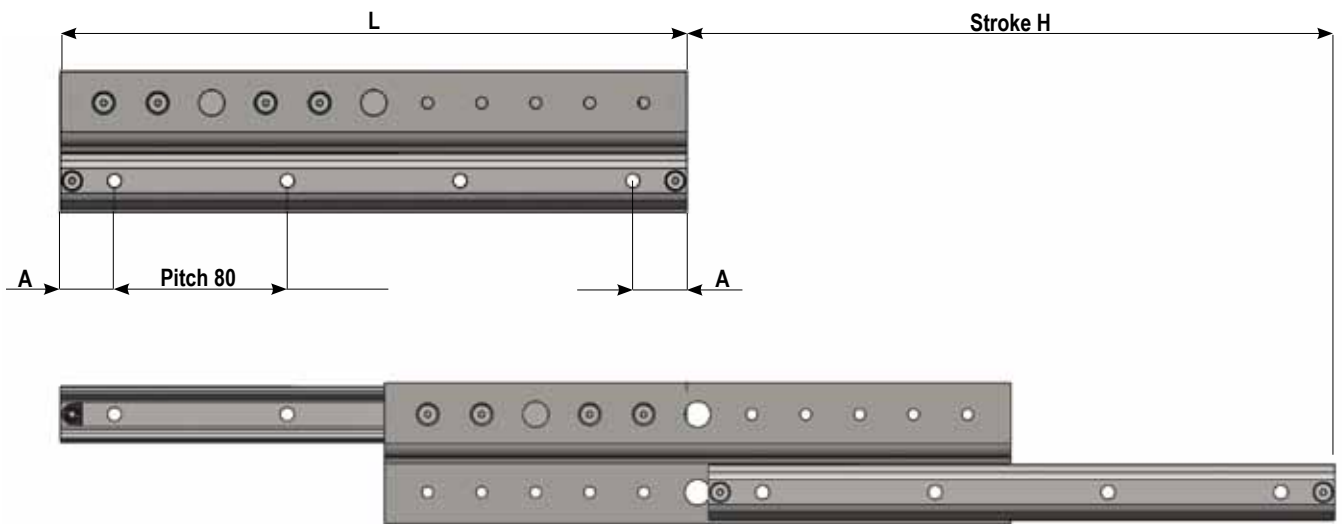
TQAZ, TQAX

The TQAZ, TQAX slides have a very compact and squared design, obtained by welding the two rails together, in which are running a pair of 3-roller sliders on each side. Fixed structure and mobile part are fixed to the sliders. The slide offer a stroke equal to its length. Suitable also for vertical applications.

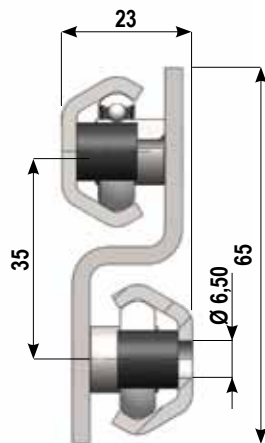
Due to its independent sliders, the TQAZ slide allows to optimize the stroke for each version. Just by positioning the slides more close together, for longer stroke, but reducing load capacity, or further apart for shorter stroke and higher load capacity. Similar to TLQ page 47, kindly check for further info.



Steel/inox roller telescopic slides TLAZ., TLAX..



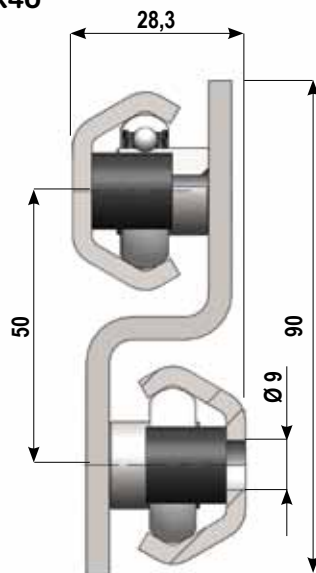
TLAZ26, TLAX26



Weight: 3,5 kg/m

Code	Lenght L (mm)	Stroke H (mm)	A (mm)	N° holes fixing	Load capacity Co rad (N)
TLA.26-300	300	300	30	4	320
TLA.26-350	350	350	55	4	400
TLA.26-400	400	400	40	5	457
TLA.26-450	450	450	25	6	500
TLA.26-500	500	500	50	6	533
TLA.26-550	550	550	35	7	560
TLA.26-600	600	600	20	8	581
TLA.26-650	650	650	45	8	600
TLA.26-700	700	700	30	9	615
TLA.26-750	750	750	55	9	628
TLA.26-800	800	800	40	10	640
TLA.26-850	850	850	25	11	650
TLA.26-900	900	900	50	11	658
TLA.26-1000	1000	1000	20	13	664
TLA.26-1100	1100	1100	30	14	609
TLA.26-1200	1200	1200	40	15	562

TLAZ40, TLAX40



Weight: 7 kg/m

Code	Lenght L (mm)	Stroke H (mm)	A (mm)	N° holes fixing	Load capacity Co rad (N)
TLA.40-500	500	500	50	6	752
TLA.40-550	550	550	35	7	842
TLA.40-600	600	600	20	8	914
TLA.40-650	650	650	45	8	973
TLA.40-700	700	700	30	9	1024
TLA.40-750	750	750	55	9	1066
TLA.40-800	800	800	40	10	1103
TLA.40-850	850	850	25	11	1135
TLA.40-900	900	900	50	11	1163
TLA.40-1000	1000	1000	20	13	1210
TLA.40-1100	1100	1100	30	14	1158
TLA.40-1200	1200	1200	40	15	1072
TLA.40-1300	1300	1300	50	16	998
TLA.40-1400	1400	1400	20	18	934
TLA.40-1500	1500	1500	30	19	877
TLA.40-1600	1600	1600	40	20	827

The TQAX are complete INOX slides, same dimensions and performances as standard steel version TQAZ. Load capacity indicated for single slide.