



*Inspired
by safety*

**HAZ-MAT
&
RESCUE
PRODUCTS**

CONTENTS

1.0. LIFTING BAGS	<ul style="list-style-type: none"> 1.1. CATCH BAGS 4 1.2. LOW-PRESSURE LIFTING BAGS 0.5 BAR 5 1.3. MEDIUM-PRESSURE LIFTING BAGS 1.0 BAR 6 1.4. HIGH-PRESSURE LIFTING BAGS 7 <ul style="list-style-type: none"> 8 bar system 8 <ul style="list-style-type: none"> SLK model 8 SLK-L model 9 SBF-H model (flat bag) 10 10 bar system 12 <ul style="list-style-type: none"> SLK-H model 12 1.5. INFLATION ACCESSORIES 14
2.0. RESCUE	<ul style="list-style-type: none"> 2.1. RESCUE STRETCHER 16 2.2. RESCUE WALKWAY 17 2.3. WATERWALLS 18
3.0. SEALING PRODUCTS	<ul style="list-style-type: none"> 3.1. INFLATABLE PIPE PLUGS 20 3.2. GULLY SEALING SET 22 3.3. LEAK SEALING LANCE SET 24 3.4. PIPE PLUG KIT 25 3.5. MINI LEAK SEALING BAGS 27 3.6. LARGE LEAK SEALING BAGS 28 3.7. SEALING TUBES 30 3.8. SEALING BANDAGES 31 3.9. VACUUM DRAINAGE BAG 32 3.10. DRAINAGE SEALING BAG 33 3.11. DRAINAGE PIPE SEALING BAGS 34 3.12. MEGA LEAK SEALING KIT 35
4.0. WATER TANKS	<ul style="list-style-type: none"> 4.1. SELF-SUPPORTING INTERCEPTIVE TANKS 38 4.2. TRANSPORT TANKS 40 4.3. CLOSED RUBBER TANKS 42 4.4. DRINKING WATER TANKS 44 4.5. MOBILE DECANTING UNITS 46 4.6. BERMS 47 4.7. HELICOPTER UNION TANKS 48
5.0. ABOUT US	<ul style="list-style-type: none"> 5.1. WARRANTY 50 5.2. ABOUT US 51



FOLLOW
USER MANUAL

WEAR PERSONAL
PROTECTIVE EQUIPMENT





Catch Bags are used to "catch" the vehicle when uprighting it for a soft landing and to prevent secondary tip-over. They are built to prevent dangerous and uncontrolled descent of any vehicle or object. Perfect in combination with Savatech low-pressure lifting bags.

**Good stability
in all conditions**

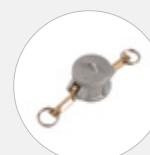
**Special
air-release openings**

**Extremely
durable**

**Quick assembly
and disassembly**



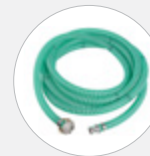
**3-WAY
DISTRIBUTOR**
574579



**BLIND
COUPLING 1 1/2"**
574581



BLOWER
574580



**INFLATION
HOSE 10 m**
574578



TOP COVER
579669

LONG HEAVY VEHICLE SET

LOW-PRESSURE BAGS

2 x MS 45	527296
4 x MS 210	527298
1 x Controller FKA-6	545632
1 x Compressor/blower	545639
6 x Inflation hose (yellow 15 m)	577957
1 x Inflation hose (black 15 m)	577958

CATCH BAGS

3 x SCB-1	574577
3 x Inflation hose 10 m	574578
1 x Blower	574580
1 x Three-way distributor	574579
1 x Blind coupling	574581
1 x Repair kit	578468

HEAVY VEHICLE SET

LOW-PRESSURE BAGS

1 x MS 45	527296
2 x MS 210	527298
1 x Controller FKA-4	545631
1 x Compressor/blower	545639
3 x Inflation hose (yellow 15 m)	577957
1 x Inflation hose (black 15 m)	577958

CATCH BAGS

2 x SCB-1	574577
2 x Inflation hose 10 m	574578
1 x Blower	574580
1 x Three-way distributor	574579
1 x Blind coupling	574581
1 x Repair kit	578468

TECHNICAL DATA

TYPE	PART NUMBER	DIMENSIONS					WEIGHT	WORKING PRESSURE	NOMINAL CONTENT	AIR REQUIREMENT	MAX. HEIGHT	INFLATION TIME
		BOTTOM		TOP		HEIGHT						
		LENGTH	WIDTH	LENGTH	WIDTH							
		[cm]	[cm]	[cm]	[cm]							
SCB-1	574577	140	140	100	100	10	22	< 0.2	1700	2000	160	60-90



LOW-PRESSURE LIFTING BAGS 0.5 bar

1. 2.



Low-pressure lifting bags are used for lifting very large objects. They have special TOP GRIP pads bonded to the top and bottom of the bag. Top Grip pad offers heavy duty protection from slipping, puncture, abrasion and premature wear. Used for uprighting trucks, rail cars, and other types of vehicles or structures.



Lifting height
up to 2.1 m

Ideal for towing –
recovery

Special
TOP GRIP pads

Use on all grounds
(rock, glass, metal)

CONTROLLERS

ADAPTERS



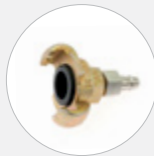
SINGLE FITTING
CONTROLLER
0.5 bar
553361



SHUT-OFF
+ SAFETY
VALVE 0.5 bar
577465



DOUBLE FITTING
CONTROLLER
0.5 bar
507801



ADAPTER
CLAW/26
529704

INFLATION HOSES



TYPE	5 m	15 m
RED	563931	577956
YELLOW	507802	577957
BLACK	507803	577958



TECHNICAL DATA

TYPE	PART NUMBER	DIMENSIONS		WEIGHT	WORKING PRESSURE	NOMINAL CONTENT	AIR REQUIREMENT	MAX LIFTING CAPACITY	MAX. LIFTING HEIGHT	INFLATION VALVE
		DIAMETER	HEIGHT							
		[cm]	[cm]		[bar]	[l]	[l]	[t]	[cm]	Thread size
MS 45	527296	102	10	16	0.5	480	840	4	45	R 1/2"-female
MS 122	527297	135	10	30	0.5	1800	3150	7	122	R 3/4"-male
MS 210	527298	145	10	43	0.5	3200	5600	9	210	R 3/4"-male



Sauval
1.0
B A R

Medium-pressure lifting bags provide high lifts. They have a soft footprint which makes them ideal for lifting softer structures since the lifting force is spread over a wider area.

Perfect performance
on soft grounds

Suitable
for high lifts

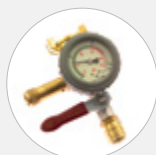
Made from extra
durable materials

Extra fast inflation
and deflation



TOP GRIP pads
can be supplied
on request

CONTROLLERS



SINGLE FITTING
CONTROLLER
1.0 bar
551503

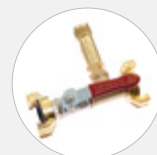


DOUBLE FITTING
CONTROLLER
1.0 bar
504061

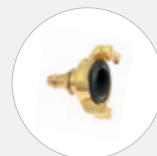


DOUBLE DEADMAN
CONTROLLER 1.0 bar
- PLASTIC BOX
528119

ADAPTERS

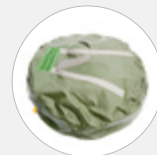


SHUT-OFF +
SAFETY VALVE
1.0 bar
551504



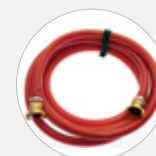
ADAPTER
GEKA/26
575711

CARRY-ON VALISE (FOR 2 BAGS)



521483 MA
521485 MB
521486 MC
521487 MD

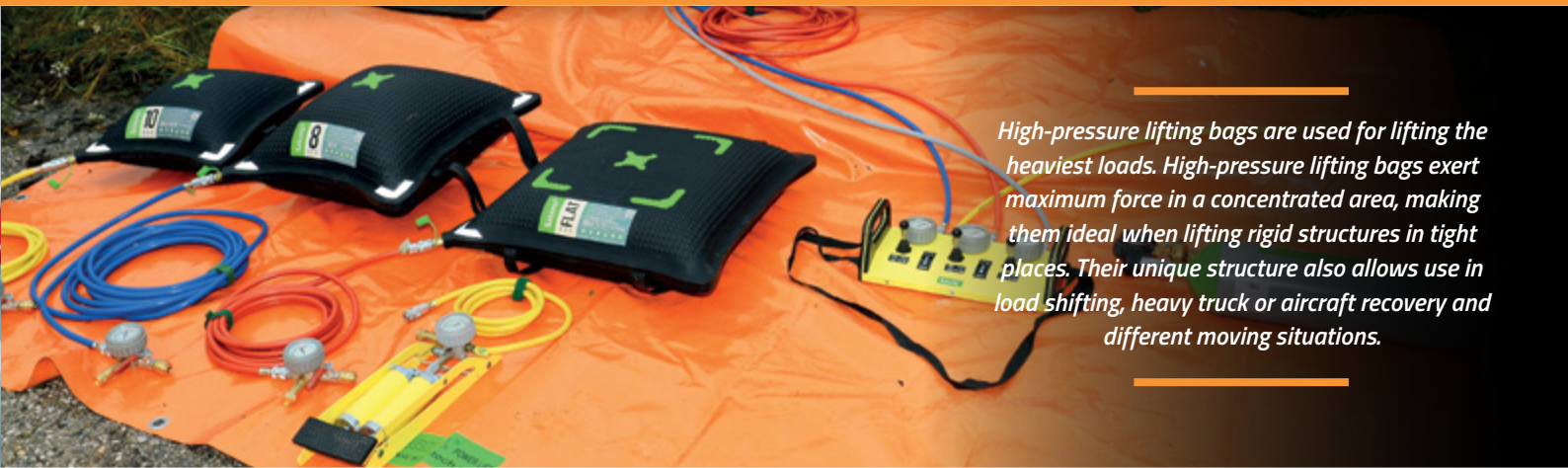
INFLATION HOSES



TYPE	5 m	10 m
RED	525662	538935
YELLOW	504063	519817
BLACK	504064	577464

TECHNICAL DATA

TYPE	PART NUMBER	DIMENSIONS		WEIGHT	WORKING PRESSURE	NOMINAL CONTENT	AIR REQUIREMENT	MAX LIFTING CAPACITY	MAX. LIFTING HEIGHT	INFLATION VALVE
		DIAMETER	HEIGHT							
		[cm]	[cm]	[kg]	[bar]	[l]	[l]	[t]	[cm]	Thread size
MA	521478	61	5	7.5	1.0	125	295	3	43	R 3/8" - male
MB	521479	76	5	12	1.0	270	620	4.7	59	R 3/8" - male
MC	521481	91	5	15	1.0	400	900	6.7	61	R 3/8" - male
MD	521482	122	10	35	1.0	1170	2350	12	100	R 3/8" - male



High-pressure lifting bags are used for lifting the heaviest loads. High-pressure lifting bags exert maximum force in a concentrated area, making them ideal when lifting rigid structures in tight places. Their unique structure also allows use in load shifting, heavy truck or aircraft recovery and different moving situations.

Extremely durable

Heavy duty

EN 13731 certified

Thin design



8
BAR

Sauval

FLAT
BAR

Sauval

10
BAR

Sauval



Unique anti-slip surface



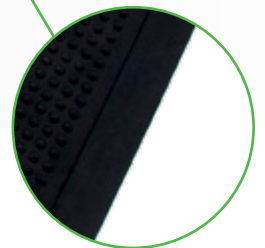
Reflective corner markings



Clear & distinctive labels



Strong manipulation handles



Cone-shaped protection edges



EN 13731
certified

Stackable up
to 2 bags

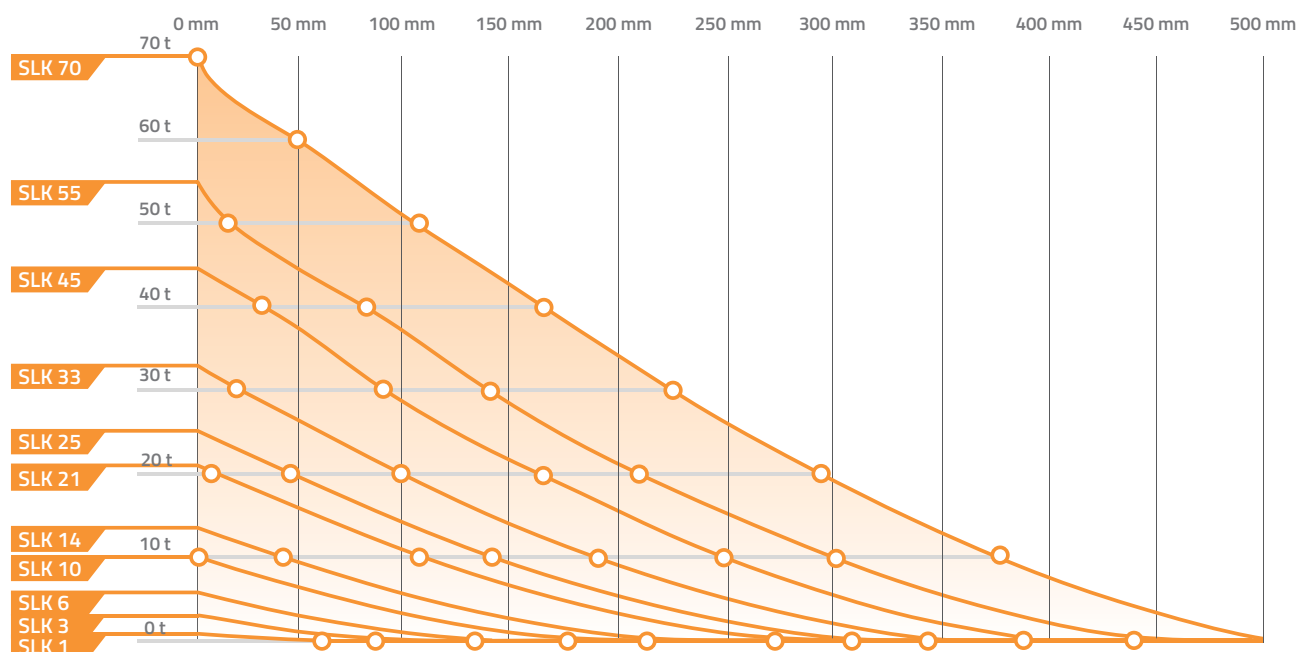
Extra
durable

Thin
design

TECHNICAL DATA

TYPE	PART NUMBER	DIMENSIONS			WEIGHT	WORKING PRESSURE		AIR REQUIREMENT		MAX. LIFTING CAPACITY		MAX. LIFTING HEIGHT	
		LENGTH	WIDTH	HEIGHT									
		[cm]	[cm]	[cm]		[bar]	[psi]	[l]	[cu./Ft.]	[t]	[Tons]	[cm]	[inch]
SLK 1	77973	15	15	2.5	0.55	8	116	5	0.2	0.8	0.9	8	3.1
SLK 3	77974	22.5	22.5	2.5	1.25	8	116	15	0.5	2.7	3	13	5.1
SLK 6	77975	30	30	2.5	2	8	116	42	1.5	5.5	6.1	16	6.3
SLK 10	76734	38	38	2.5	3.5	8	116	86	3.0	10.1	11.1	21	8.3
SLK 14	76735	45	45	2.5	5	8	116	152	5.4	13.5	14.9	25	9.8
SLK 21	76736	55	55	2.5	7	8	116	296	10.5	21.1	23.2	30	11.8
SLK 25	76737	61	61	2.5	9	8	116	416	14.7	25.2	27.7	34	13.4
SLK 33	76738	69	69	2.5	11	8	116	621	21.9	33	36.3	38	15
SLK 45	76739	78	78	2.5	14	8	116	921	32.5	44.6	49.1	42	16.5
SLK 55	76794	87	87	2.5	18	8	116	1305	46.1	55	60.5	47	18.5
SLK 70	573241	94.5	94.5	2.5	22.5	8	116	1505	53.2	70.4	77.4	52	20.5

LIFTING HEIGHT [mm]



LIFTING CAPACITY [t]



HIGH-PRESSURE LIFTING BAGS 8 BAR

1. 4.



EN 13731
certified

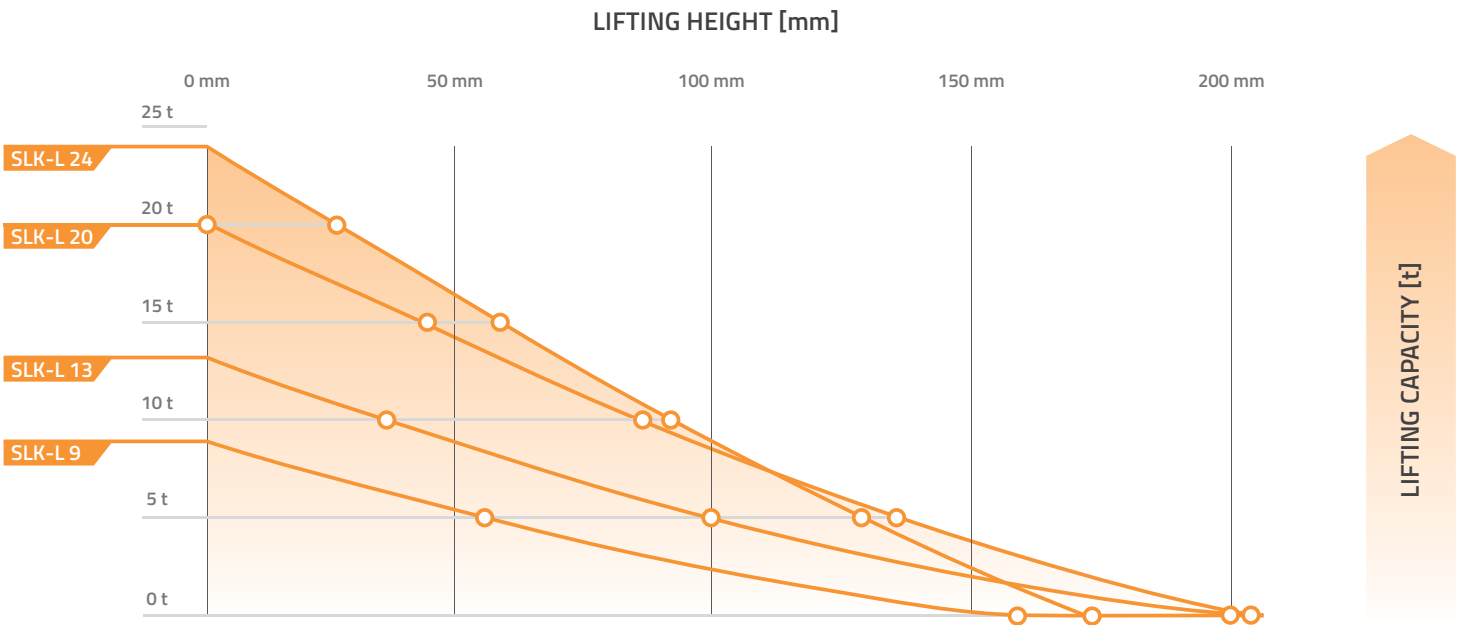
Stackable up
to 2 bags

Narrow
design

Easy
manipulation

TECHNICAL DATA

TYPE	PART NUMBER	DIMENSIONS			WEIGHT	WORKING PRESSURE		AIR REQUIREMENT		MAX. LIFTING CAPACITY		MAX. LIFTING HEIGHT	
		LENGTH	WIDTH	HEIGHT									
		[cm]	[cm]	[cm]		[bar]	[psi]	[l]	[cu./Ft.]	[t]	[Tons]	[cm]	[inch]
SLK-L 9	519833	45	30	2.5	3.3	8	116	95	3.4	8.9	9.8	19	7.5
SLK-L 13	519834	50	37.5	2.5	4.5	8	116	170	6.0	13.2	14.5	23	9.1
SLK-L 20	519837	75	37.5	2.5	6.5	8	116	270	9.5	20.2	22.2	23	9.1
SLK-L 24	77983	102	32	2.5	7.8	8	116	220	7.8	24	26.4	20	7.9





FLAT
BAG



EN 13731
certified

Stackable up
to 3 bags

Superb
stability

Flat
surface

TECHNICAL DATA

TYPE	PART NUMBER	DIMENSIONS			WEIGHT	WORKING PRESSURE		AIR REQUIREMENT		MAX. LIFTING CAPACITY		MAX. LIFTING HEIGHT		MAX. LIFTING CAPACITY & MAX. LIFTING HEIGHT	
		LENGTH	WIDTH	HEIGHT											
		[cm]	[cm]	[cm]											
SFB-K 7/17	519883	55	55	2.5	7	8	116	224	7.9	21.1	23.2	17	6.7	6.7	7.4
SFB-K 10/17	519884	61	61	2.5	9	8	116	350	12.4	25.2	27.7	17	6.7	9.5	10.5
SFB-K 20/17	519885	78	78	2.5	14	8	116	520	18.4	44.6	49.1	17	6.7	20.2	22.2
SFB-K 33/17	519886	91.5	91.5	2.5	20	8	116	810	28.6	64	70.4	17	6.7	33.3	36.6

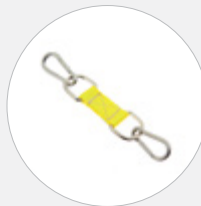
ACCESSORIES (SUITABLE ONLY FOR FLAT BAGS)



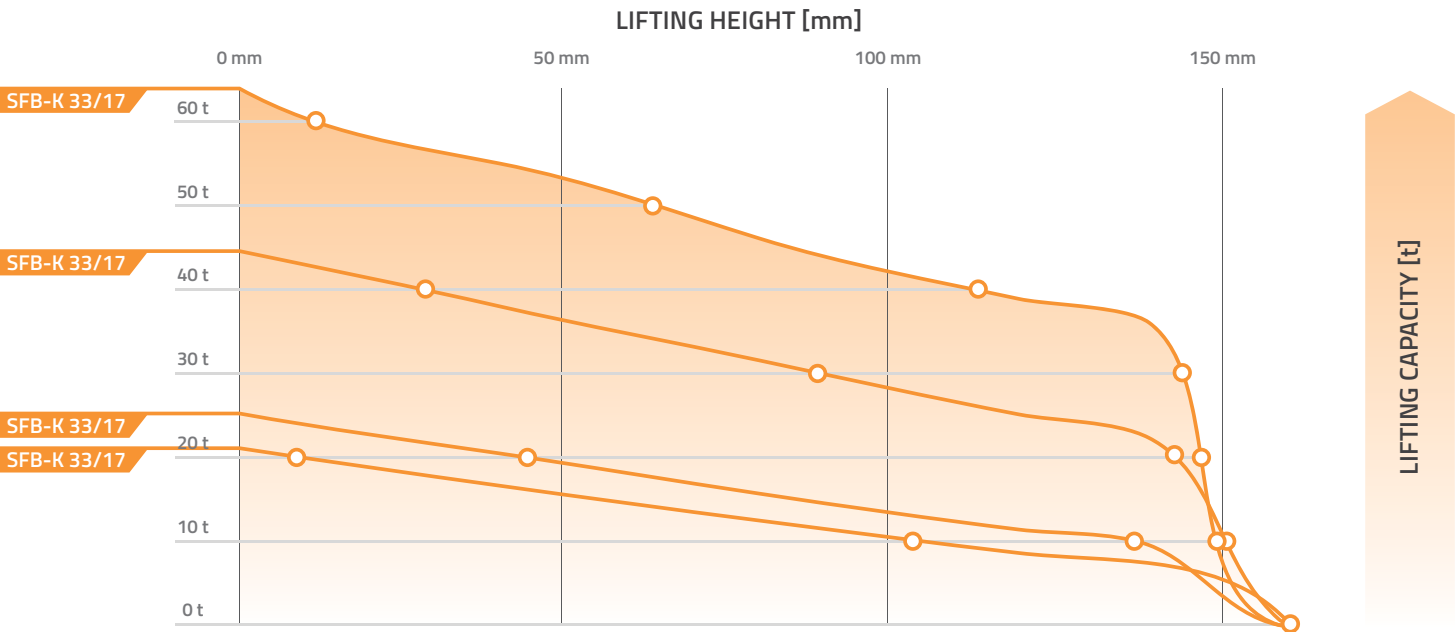
TRIPLE DEADMAN
CONTROLLER 8 bar -
METAL BOX
544124



SET OF TRIPLE FLAT
BAG CONNECTORS,
ORANGE
(4 PCS PER SET)
530545



SET OF DUAL FLAT
BAG CONNECTORS,
YELLOW
(4 PCS PER SET)
529480



INFLATION HOSES



TYPE	5 m	10 m
RED	516191	516193
YELLOW	517967	517968
BLUE	516192	516194
GREY	529317	529318



CONTROLLERS



SINGLE FITTING
CONTROLLER 8 bar
76681



HAND-HELD DOUBLE
DEADMAN CONTROLLER
8 bar
519820



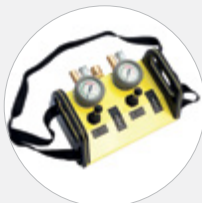
DOUBLE FITTING
CONTROLLER 8 bar
76682



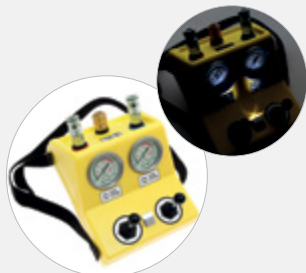
DOUBLE DEADMAN
CONTROLLER 8 bar –
PLASTIC BOX
528126



HAND-HELD SINGLE
DEADMAN CONTROL-
LER 8 bar
519819



DOUBLE DEADMAN
CONTROLLER 8 bar –
METAL BOX
528132



DOUBLE DEADMAN
CONTROLLER
8 bar – LED LIGHTS,
PLASTIC BOX
576803

OTHER ACCESSORIES



HOSE WITH
SHUT-OFF VALVE 0,5 m
525278



HOSE WITH
SHUT-OFF + SAFETY
VALVE 8 bar, 10 m
544111



FOOT PUMP 8 bar
538320



SHUT-OFF + SAFETY
VALVE 8 bar
519051



INFLATION
DISTRIBUTOR
1 m, YELLOW
522999



LOADING PLATES
LOAD PLATE # 350 556308
LOAD PLATE # 420 556309
LOAD PLATE # 520 556310
LOAD PLATE # 670 556311

MINI LIFTING SET











EN 13731
certified

Increased lifting
capacity

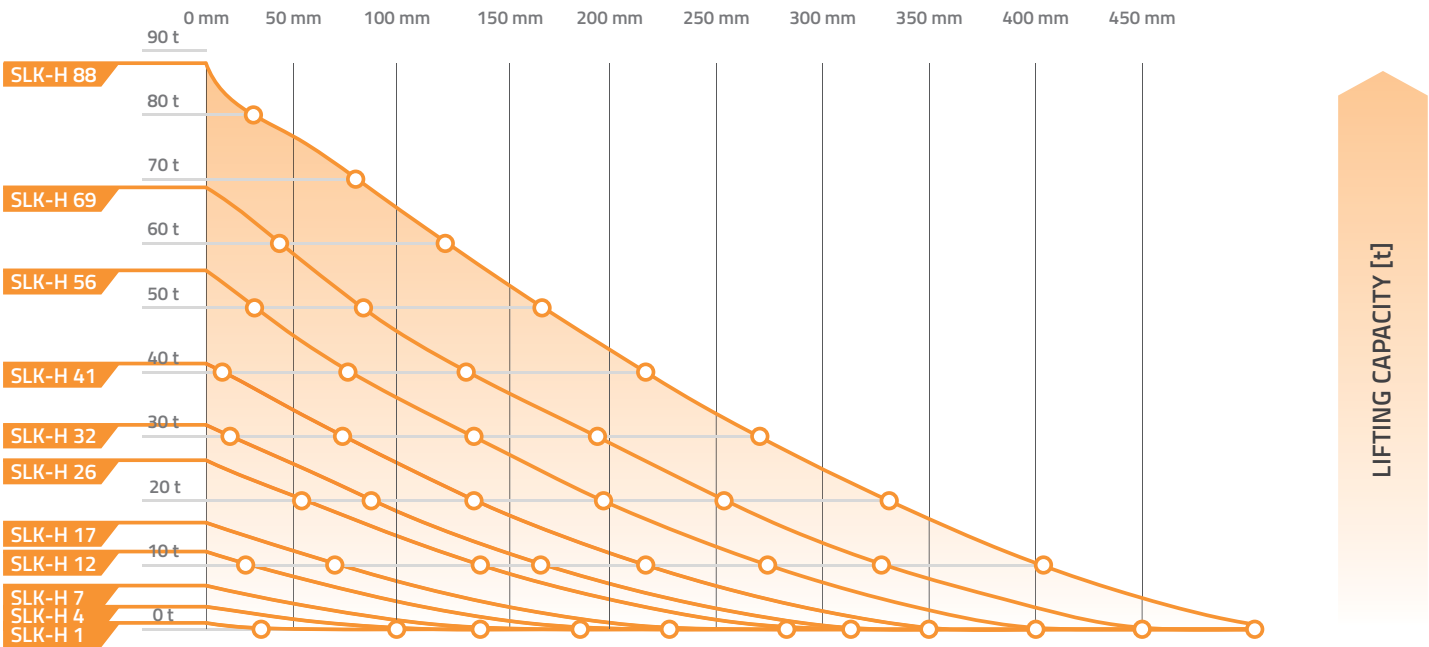
Compatible with
8 bar bags

Heavy
duty

TECHNICAL DATA

TYPE	PART NUMBER	DIMENSIONS			WEIGHT	WORKING PRESSURE		AIR REQUIREMENT		MAX. LIFTING CAPACITY		MAX. LIFTING HEIGHT	
		LENGTH	WIDTH	HEIGHT									
		[cm]	[cm]	[cm]		[bar]	[psi]	[l]	[cu./Ft.]	[t]	[Tons]	[cm]	[inch]
SLK- H 1	291240	15	15	2.5	0.55	10	145	7	0.3	1	1.1	8	3.1
SLK- H 4	291241	22.5	22.5	2.5	1.25	10	145	19	0.7	3.3	3.6	13	5.1
SLK- H 7	291242	30	30	2.5	2	10	145	52	1.9	6.8	7.5	16	6.3
SLK- H 12	291243	38	38	2.5	3.5	10	145	106	3.8	12.1	13.3	21	8.3
SLK- H 17	291244	45	45	2.5	5	10	145	186	6.6	16.6	18.3	25	9.8
SLK- H 26	291245	55	55	2.5	7	10	145	362	12.8	26.3	28.9	30	11.8
SLK- H 32	291246	61	61	2.5	9	10	145	508	18.0	31.8	35	34	13.4
SLK- H 41	291247	69	69	2.5	11	10	145	759	26.8	41.3	45.4	38	15
SLK- H 56	291248	78	78	2.5	14.1	10	145	1122	39.7	55.8	61.4	42	16.5
SLK- H 69	291249	87	87	2.5	18.2	10	145	1595	56.4	68.7	75.6	47	18.5
SLK- H 88	291250	94.5	94.5	2.6	22.7	10	145	1650	58.3	88	96.8	52	20.5

LIFTING HEIGHT [mm]



INFLATION HOSES



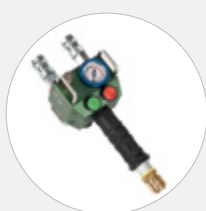
TYPE	5 m	10 m
RED	291261	291265
YELLOW	291260	291264
BLUE	291262	291266
GREY	291263	291267



CONTROLLERS



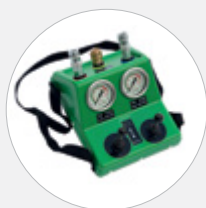
**SINGLE FITTING
CONTROLLER 10 bar**
291258



**HAND-HELD DOUBLE
DEADMAN CONTROLLER**
10 bar
291257



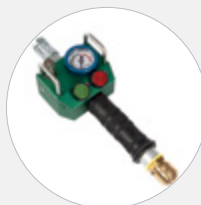
**DOUBLE FITTING
CONTROLLER 10 bar**
291259



**DOUBLE DEADMAN
CONTROLLER 10 bar –
PLASTIC BOX**
291255



**DOUBLE DEADMAN
CONTROLLER**
10 bar – LED LIGHTS,
PLASTIC BOX
291286



**HAND-HELD
SINGLE DEADMAN
CONTROLLER 10 bar**
291256



**DOUBLE DEADMAN
CONTROLLER 10 bar –
METAL BOX**
291254

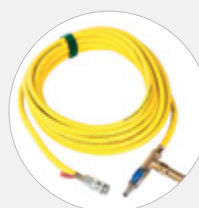
ADAPTERS



ADAPTER
8 BAR / 10 BAR
291284



**SHUT-OFF + SAFETY
VALVE 10 BAR**
291282



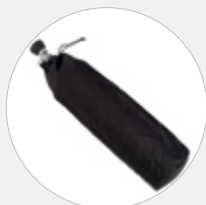
**HOSE WITH SHUT-OFF
+ SAFETY VALVE 10
BAR, 10 m**
291290

**Simple
switch to 8 bar
accessories**

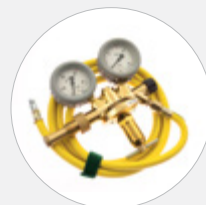
*Inflation accessories have been designed for precision control, high reliability and long life.
They are used with all of our lifting bags – from the source of air to controllers.*



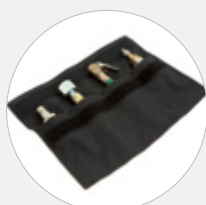
COMPRESSED AIR
CYLINDER 300 bar, 6l
528746



CARRY-ON VALISE
FOR COMPRESSED
AIR CYLINDER
519811



PRESSURE REDUCER
200/300 bar
523835



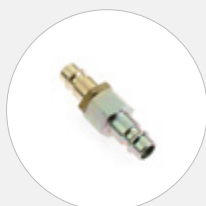
UNIVERSAL
CONNECTOR KIT
519809



TRUCK TYRE VALVE
CONNECTION
519806



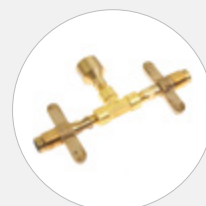
TRUCK TYRE VALVE
519805



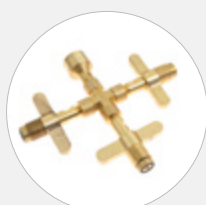
COMPRESSED AIR
MAINS
519808



TRUCK TYRE
INFLATOR ADAPTER
519807



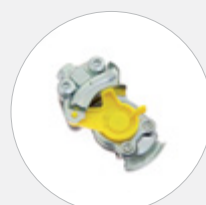
DUAL CONNECTOR
FOR COMPRESSED AIR
CYLINDERS
529383



TRIPLE CONNECTOR
FOR COMPRESSED
AIR CYLINDERS
529384



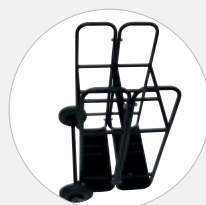
TRUCK COMPRESSED
AIR CONNECTION
529005



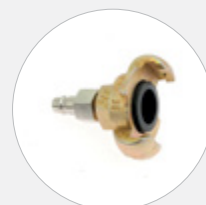
TRUCK COMPRESSED
AIR CONNECTION-
BLIND COUPLING
529006



SAFETY CARRIER
RACK-TWO CYLINDER
6l MODUL-TROLLEY
SYSTEM
542868

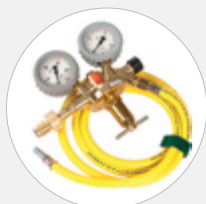


SAFETY CARRIER
RACK-FOUR
CYLINDER 6l MODUL-
TROLLEY SYSTEM
542872



ADAPTER FOR
CONSTRUCTION SITE
COMPRESSOR
529704

INFLATION ACCESSORIES (SUITABLE ONLY FOR 10 BAR BAGS)



PRESSURE
REDUCER 300 bar
557311



FOLLOW
USER MANUAL

WEAR PERSONAL
PROTECTIVE EQUIPMENT



2. 1.

RESCUE STRETCHER

The inflatable stretcher is designed for use in all conditions and it provides total safety and protection of the wounded during a rescue action ashore, in the water or air. Its compact design assures simple loading in a vehicle, a boat, a helicopter or a plane.



Floatable design

Excellent stability

Used in all circumstances

Padded grip handles



STANDARD EQUIPMENT – SUPPLIED TOGETHER WITH A STRECHER



TRANSPORT BAG



INFLATION HOSE

OPTIONAL EQUIPMENT – PURCHASED SEPARATELY



HAND PUMP



REPAIR KIT

TECHNICAL DATA

TYPE	PART NUMBER	DIMENSIONS			WEIGHT	WORKING PRESSURE	CARRYING CAPACITY	AIR REQUIREMENT
		LENGTH	WIDTH	HEIGHT				
		[cm]	[cm]	[cm]				
STRETCHER	524533	240	72	37	17	0.5	150	750



The rescue walkway is an inflatable rescue path used on unstable terrain for casualty recovery operations. It is used by fire brigades and other rescue units. The design of the walkway assures superb stability in all circumstances and can be used either as a raft or a work platform on ice, water, sand, to name just a few. It can be easily inflated and deployed.

**Rapidly unrolled,
inflated and emptied**

**Used as
a raft**

**Used as
a working platform**

**Excellent
stability**

STANDARD EQUIPMENT – SUPPLIED TOGETHER WITH A WALKWAY



INFLATION HOSE



OPTIONAL EQUIPMENT – PURCHASED SEPARATELY



TRANSPORT BAG



HAND PUMP



REPAIR KIT

TECHNICAL DATA

TYPE	PART NUMBER	DIMENSIONS			WEIGHT [kg]	WORKING PRESSURE [bar]	CARRYING CAPACITY [kg]	AIR REQUIREMENT [l]
		LENGTH	WIDTH	HEIGHT				
		[cm]	[cm]	[cm]				
AT 2.5	563835	250	140	15	15	0.5	500	750
AT 5	524542	500	140	15	26	0.5	1000	1465
AT 10	524543	1000	140	15	55	0.5	2000	3000
AT 15	551369	1500	140	15	78	0.5	3000	4725



Waterwalls are precisely engineered emergency barriers against the incursion of flood waters. They replace conventional sandbags and are more durable, economical and much easier to handle, which is of utmost importance in an emergency situation.

Three design versions

Simple usage and storage

Extremely durable in all conditions

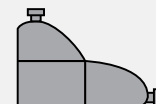
A better alternative to sandbags



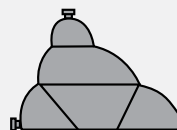
DESIGN VERSIONS



TYPE WW A



TYPE WW B



TYPE WW C

OPTIONAL EQUIPMENT – PURCHASED SEPARATELY



PLASTIC BOX
567 199

TECHNICAL DATA

TYPE	PART NUMBER	DIMENSIONS			MAX. PROTECTION HEIGHT	WEIGHT	CAPACITY (APPROX.)
		LENGTH	WIDTH	HEIGHT			
		[m]	[m]	[m]		[kg]	[l]
WW A2	508184	2	2.2	1.1	0.9	40	2600
WW A3	511303	3	2.2	1.1	0.9	50	3900
WW A4	520041	4	2.2	1.1	0.9	60	5300
WW A5	504594	5	2.2	1.1	0.9	70	6600
WW B2	508187	2	1.7	1.2	0.9	45	2600
WW B3	520042	3	1.7	1.2	0.9	55	3900
WW B4	520043	4	1.7	1.2	0.9	65	5300
WW B5	520046	5	1.7	1.2	0.9	75	6600
WW C2/120	577050	2	2.2	1.4	1.2	50	3500
WW C3/120	577051	3	2.2	1.4	1.2	72	5400
WW C4/120	568715	4	2.2	1.4	1.2	82	7200
WW C5/120	579452	5	2.2	1.4	1.2	115	9000
WW C2/140	568032	2	3.3	1.8	1.4	120	6400
WW C3/140	568033	3	3.3	1.8	1.4	140	9500
WW C4/140	567196	4	3.3	1.8	1.4	174	12700
WW C5/140	567198	5	3.3	1.8	1.4	210	16000



FOLLOW
USER MANUAL

WEAR PERSONAL
PROTECTIVE EQUIPMENT





1 BAR; 2.5 BAR

Inflatable pipe plugs reinforced with Aramid cord are noted for a wide application range. They can be used in different situations, where a pipe needs to be blocked or a bypass made.



Flexible design

Aramid cord reinforced

Superior grip surface

A wide usage range



POLY LIFT
HOSE 10 m,
1 bar; 2.5 bar
60958



POLY LIFT
HOSE 10 m,
1.5 bar
579623



TYPE	10 m
RED 2.5 bar	74268
BLUE 2.5 bar	71248
YELLOW 2.5 bar	76688
RED 1.5 bar	529665
BLUE 1.5 bar	530372
YELLOW 1.5 bar	579624



SINGLE FITTING CONTROLLER	SINGLE FITTING CONTROLLER	SINGLE FITTING CONTROLLER
2.5 BAR	1.5 BAR	1.0 BAR
60310	529663	74653

BACK PRESSURE MEASURED IN A DRY IRON PIPE (BAR)

SIZE	PIPE DIAMETER [mm]																				
	40	70	100	150	200	250	300	350	400	500	600	800	1000	1200	1300	1400	1500	1600	1700	1800	
40-70	2.0	1.2																			
70-150		2.2	1.7	1.3																	
100-200			2.2	1.7	1.3																
150-200				2.0	1.5																
150-300				2.2	2.0	1.4	1.2														
200-400					2.2	2.0	1.7	1.5	1.2												
300-525							2.0	1.7	1.5	1.2											
350-600								2.1	1.9	1.6	1.3										
375-750									2.0	1.7	1.4										
500-800										1.8	1.4	1.1									
500-1000										1.0	0.8	0.6	0.5								
600-1200											1.0	0.7	0.6	0.5							
750-1500												1.0	0.9	0.7	0.6	0.5	0.4				
800-1800													1.0	1.0	0.8	0.7	0.6	0.5	0.5	0.4	0.4



1.5 BAR

INFLATABLE PIPE PLUGS

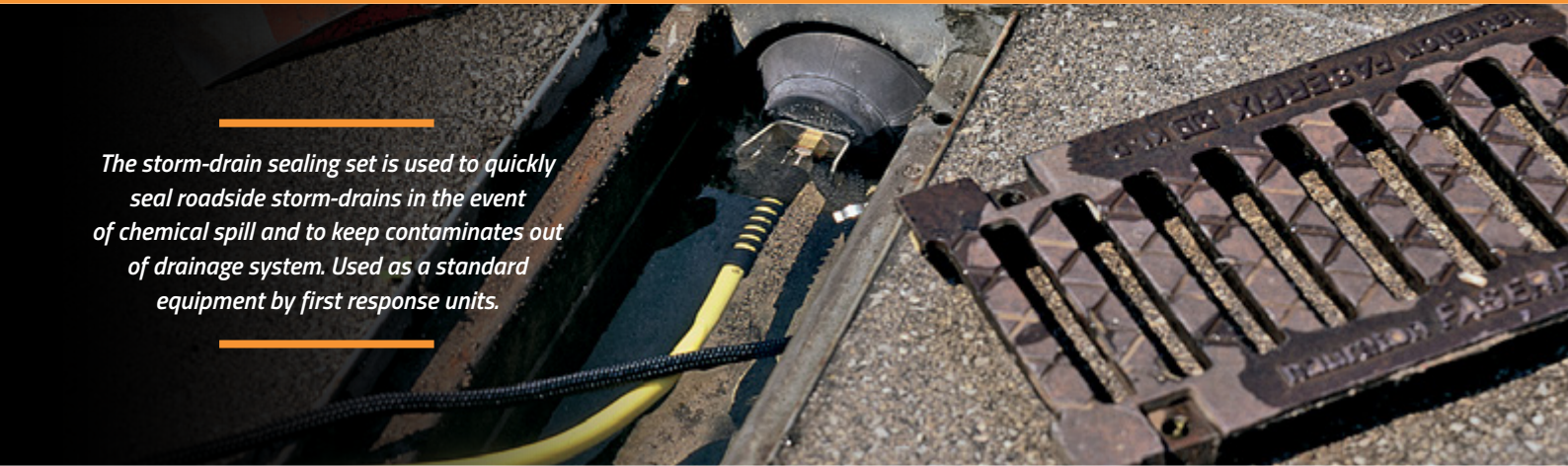
3.1.

TECHNICAL DATA: PLUGY (BLOCKING PLUGS)

TYPE	PART NUMBER	SIZE USAGE RANGE		WEIGHT	WORKING PRESSURE	DEFLATED PLUG DIMENSIONS		EYE BOLT M THREAD	INFLATION VALVE
		MIN. DIAMETER	MAX. DIAMETER			DIAMETER	LENGTH		
		[mm]	[mm]			[mm]	[mm]		Thread size
PLUGY 40-70	519423	40	70	0.3	2.5	35	195	/	R 1/4"
PLUGY 70-150	519424	70	150	0.6	2.5	68	335	/	R 1/4"
PLUGY 100-200	60417	100	200	1.1	2.5	92	535	6	R 1/4"
PLUGY 150-200	526850	150	200	1.8	2.5	142	385	8	R 1/4"
PLUGY 150-300	60418	150	300	1.9	2.5	142	575	8	R 1/4"
PLUGY 200-400	60419	200	400	3.0	2.5	192	635	8	R 1/4"
PLUGY 300-525	60599	300	525	6.0	2.5	272	675	8	R 1/4"
PLUGY 350-600	60422	350	600	8.4	2.5	322	865	10	R 1/4"
PLUGY 375-750	60606	375	750	10.9	2.5	342	1085	10	R 1/4"
PLUGY 500-800	60453	500	800	17.3	2.5	472	1185	10	R 1/4"
PLUGY 500-1000	530301	500	1000	17.3	1.5	472	1185	10	R 1/4"
PLUGY 600-1200	530302	600	1200	39.0	1.5	574	1500	10	2 × R 3/8"
PLUGY 750-1500	78959	750	1500	65.0	1.0	600	2300	10	2 × R 1/4"
PLUGY 800-1800	535881	800	1800	105.0	1.0	600	2960	10	2 × R 1/4"

TECHNICAL DATA: PLUGSY (BYPASS PLUGS)

TYPE	PART NUMBER	SIZE USAGE RANGE		WEIGHT	WORKING PRESSURE	DEFLATED PLUG DIMENSIONS		EYE BOLT M THREAD	INFLATION VALVE	BYPASS DIAMETER
		MIN. DIAMETER	MAX. DIAMETER			DIAMETER	LENGTH			
		[mm]	[mm]			[mm]	[mm]		Thread size	(female)
PLUGSY 70-150	526849	70	150	1.7	2.5	68	350	/	R 1/8"	1/2"
PLUGSY 100-200	60429	100	200	2.6	2.5	92	550	6	R 1/4"	1"
PLUGSY 150-200	526851	150	200	3.2	2.5	142	420	8	R 1/4"	1"
PLUGSY 150-300	60432	150	300	4.4	2.5	142	590	8	R 1/4"	1"
PLUGSY 200-400	60434	200	400	6.3	2.5	192	635	8	R 1/4"	2"
PLUGSY 300-525	60630	300	525	11.9	2.5	272	675	8	R 1/4"	2"
PLUGSY 350-600	60440	350	600	16.6	2.5	322	865	10	R 1/4"	2"
PLUGSY 375-750	60632	375	750	19.7	2.5	342	1085	10	R 1/4"	2"
PLUGSY 500-800	60454	500	800	31.3	2.5	472	1185	10	R 1/4"	2"
PLUGSY 500-1000	530303	500	1000	31.3	1.5	472	1185	10	R 1/4"	2"
PLUGSY 600-1200	530304	600	1200	46.0	1.5	574	1500	10	2 × R 3/8"	4"
PLUGSY 750-1500	78960	750	1500	75.0	1.0	600	2300	10	2 × R 1/4"	4"
PLUGSY 800-1800	535882	800	1800	117.0	1.0	600	2960	10	2 × R 1/4"	4"



The storm-drain sealing set is used to quickly seal roadside storm-drains in the event of chemical spill and to keep contaminates out of drainage system. Used as a standard equipment by first response units.

Quick inflation

Easy positioning

High resistance to chemicals

Used by first response units

GULLY SET 100-150

PART NUMBER	DESCRIPTION	QUANTITY [pc]
528571	Gully plug 100-150 2.5 bar with inflation hose 2.5 m and rope 2.5 m	4
528875	Foot pump with safety valve 2.5 bar	1
528744	Positioning rod, 1.5 m 3-part	1
528871	Portable case 609 x 409 x 140 Type 2	1

PORTABLE CASE
528871

GULLY PLUG 100-150 2.5 BAR
WITH INFLATION HOSE 2.5 m
AND ROPE 2.5 m
528571

FOOT PUMP
528875

POSITIONING ROD
528744

PART NUMBER	DESCRIPTION	QUANTITY [pc]
528157	Gully plug 300-500 0.5 bar with inflation hose 2 m and rope 2 m	1
529385	Inflation and safety device with finger-tight connector, pressure reducer, safety valve 0.5 bar, pressure gauge and safety coupling	1
523002	Compressed air cylinder 200 bar, 1 l	1
528871	Portable case 609 x 409 x 140 Type 2	1

GULLY SET 300-500



TECHNICAL DATA

TYPE	PART NUMBER	SIZE USAGE RANGE		WEIGHT	WORKING PRESSURE	DEFLATED PLUG DIMENSIONS		RUBBER BODY	INFLATION VALVE
		MIN. DIAMETER	MAX. DIAMETER			DIAMETER	LENGTH	LENGTH	
		[mm]	[mm]			[mm]	[mm]	[mm]	Thread size
GULLY 100-150	528571	100	150	0.5	2.5	86	200	165	R 1/4"
GULLY 300-500	528157	300	500	3.8	0.5	274	385	350	R 1/4"



The leak sealing lance set can seal holes at a distance with a remote placement and inflation lance. Sealing wedges work well in quick sealing of tanks that have been punctured by a fork-lift blade. Sealing cones work well in sealing of round hole punctures.

Easy
handling

Quick
sealing

Low air
requirement

Superior
grip surface

LEAK SEALING LANCE SET



PART NUMBER	DESCRIPTION	QUANTITY [pc]
528386	Wedge-shaped sealing bag type 1	1
528387	Wedge-shaped sealing bag type 2	1
528388	Wedge-shaped sealing bag type 3	1
528389	Cone-shaped sealing bag	1
528618	Push and inflation rod, 35 cm, chain, deflation nipple	1
528619	Push and inflation rod, 35 cm	3
529510	Shut-off unit	1
528873	Foot pump with safety valve 1.5 bar	1
532632	Portable case 470 x 360 x 120 mm type 1	1
529087	Splash disc	1

TECHNICAL DATA

TYPE	PART NUMBER	SIZE USAGE RANGE		WEIGHT	WORKING PRESSURE	DEFLATED PLUG DIMENSIONS			INFLATION VALVE
		HEIGHT	WIDTH			LENGTH	WIDTH	HEIGHT	
		[mm]	[mm]			[mm]	[mm]	[mm]	Thread size
WEDGE-SHAPED SEALING BAG TYPE 1	528386	15-45	60-80	0.3	1.5	230	60	50	R 1/4"
WEDGE-SHAPED SEALING BAG TYPE 2	528387	15-45	80-110	0.4	1.5	230	80	55	R 1/4"
WEDGE-SHAPED SEALING BAG TYPE 3	528388	30-60	110-170	0.5	1.5	230	110	70	R 1/4"
CONE-SHAPED SEALING BAG	528389	Ø 30-90		0.3	1.5	230	Ø 7	Ø 7	R 1/4"



The pipe plug kit consists of oil-resistant plugs with electrostatic and spark resistant accessories. It is used by first response units for sealing pipes of different sizes or other round holes in tanks, barrels, etc.

**Oil-resistant
plugs**

**Electrostatic and
spark protected parts**

**Corrosion-resistant
parts**

**Used by first
response units**

PIPE PLUG KIT



THE PIPE PLUG KIT CONSISTS OF:

PART NUMBER	DESCRIPTION	QUANTITY [pc]
542488	Elliptical Plugy G1 50-80 C	1
542489	Elliptical Plugy G2 80-130 C	1
542490	Elliptical Plugy G3 100-160 C	1
523289	Pneumatic plug type Z1 C	1
523290	Pneumatic plug type Z1 1/2 C	1
523292	Pneumatic plug type Z2/3 C	1
523294	Pneumatic plug type Z3/4 C	1
523296	Pneumatic plug type Z4/6 C	1
523302	Pneumatic plug type S2 C	1
523304	Pneumatic plug type S3/4 C	1
523307	Pneumatic plug type S4/6 C	1
541951	Tyre valve extension hose 1 m	2
551285	Inflation hose 3 m, antistatic	1
541957	Static discharge kit	1
541960	Hand pump - mini	1
541952	Shut-off valve R 1/8"	1
541953	Shut-off valve R 1/2"	1
541958	Bag of corks	1
542217	Portable case 609 x 409 x 140 type 3 (with foam)	1

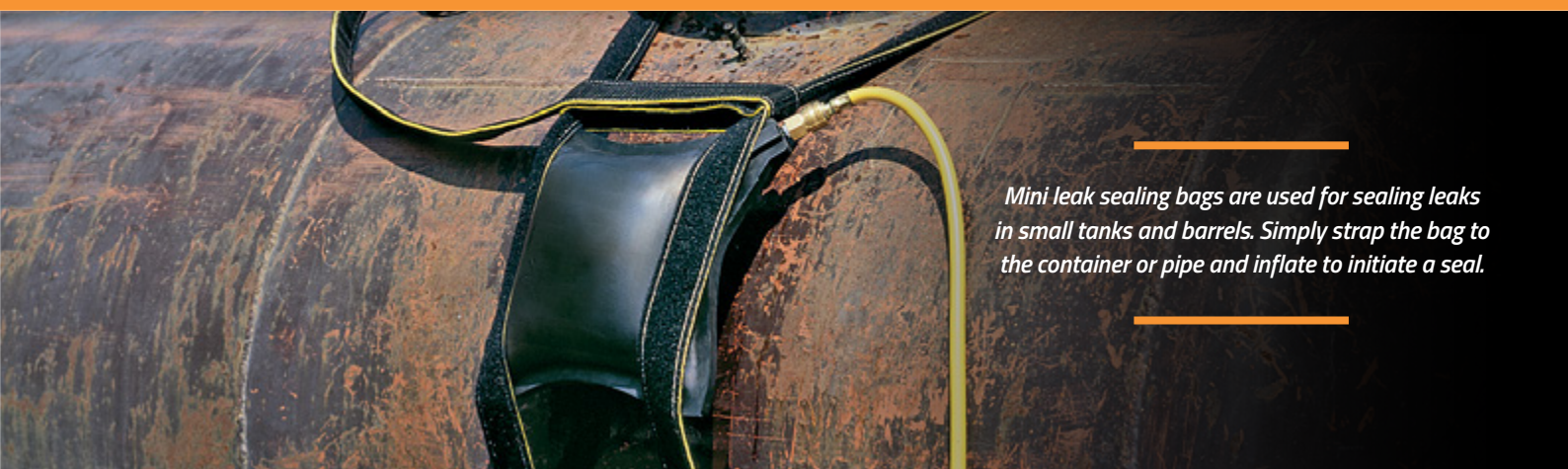
TECHNICAL DATA

TYPE	PART NUMBER	SIZE USAGE RANGE		WEIGHT	WORKING PRESSURE	DEFLATED PLUG DIMENSIONS		INFLATION VALVE	BYPASS DIAMETER
		MIN. DIAMETER	MAX. DIAMETER			DIAMETER	RUBBER BODY LENGTH		
		[mm]	[mm]			[mm]	[mm]		
ELLIPTICAL PLUGY G1 50-80 C	542488	45	80	0.3	3	45	280	R 1/4"	/
ELLIPTICAL PLUGY G2 80-130 C	542489	75	130	0.4	2.5	76	360	R 1/4"	/
ELLIPTICAL PLUGY G3 100-160 C	542490	100	160	0.6	2	98	420	R 3/8"	/
PNEUMATIC PLUG TYPE Z1 C	523289	20	30	0.01	2.5	19	65	R 1/8"	/
PNEUMATIC PLUG TYPE Z1 1/2 C	523290	33	40	0.1	2.5	32	70	R 1/4"	/
PNEUMATIC PLUG TYPE Z2/3 C	523292	50	75	0.1	2.5	45	80	R 1/4"	/
PNEUMATIC PLUG TYPE Z3/4 C	523294	75	100	0.3	2.5	70	100	R 1/4"	/
PNEUMATIC PLUG TYPE Z4/6 C	523296	100	150	0.5	2.5	85	165	R 1/4"	/
PNEUMATIC PLUG TYPE S2 C	523302	50		0.2	2.5	45	80	R 1/8"	1/8"
PNEUMATIC PLUG TYPE S3/4 C	523304	75	100	0.4	2.5	70	100	R 1/8"	1/2"
PNEUMATIC PLUG TYPE S4/6 C	523307	100	150	0.7	2.5	85	165	R 1/8"	1/2"



MINI LEAK SEALING BAGS

3. 5.



Mini leak sealing bags are used for sealing leaks in small tanks and barrels. Simply strap the bag to the container or pipe and inflate to initiate a seal.

Flexible design

Easy positioning

Used by first response unit

Low air requirement

PART NUMBER	DESCRIPTION	QUANTITY [pc]
78082	Type T1	1
78096	Type T2	1
78099	Type T3	1
528873	Foot-operated pump with safety valve 1.5 bar	1
60167	Fastening belts, 150 cm long, yellow	2
60169	Fastening belts, 300 cm long, yellow	3
528871	Portable case 609 x 409 x 140 type 2	1

MINI LEAK SEALING BAGS SET



TECHNICAL DATA

TYPE	PART NUMBER	DIMENSIONS			WEIGHT	WORKING PRESSURE	SEALING SURFACE DIMENSIONS		SEALING PRESSURE	AIR REQUIREMENT
		LENGHT	WIDTH	HEIGHT			LENGHT	WIDTH		
		[cm]	[cm]	[cm]			[cm]	[cm]		
T1	78082	15	15	1.2	0.4	1.5	10	10	1.4	1.2
T2	78096	22.5	22.5	1.2	0.8	1.5	17.5	17.5	1.4	4.5
T3	78099	30	30	1.2	1.4	1.5	25	25	1.4	10.5



Large leak sealing bags are used for fast and temporary leak sealing. They are used on tanks, in large pipes and containers of all shapes and sizes. They are suitable for use with majority of hazardous liquids, fuels, water, oils, etc. Strap the bag and inflate it with air. Use sealing plates and acid bags for additional protection.

Flexible design

Easy positioning

Used by first response unit

Low air requirement

M1 SET - 1.5 BAR



THE M1 TYPE SET - WITH BELT GUIDING SLITS CONSISTS OF:

PART NUMBER	DESCRIPTION	QUANTITY [pc]
60043	Leak sealing bag, Type M1 with belt guiding slits	1
528873	Foot-operated pump with safety valve 1.5 bar	1
529094	Inflation hose, 10 m, blue with chain and deflation nipple	1
60166	Tensioning and extension belt, 10 m long, yellow, with ratchet	2
60165	Tensioning and extension belt, 10 m long, orange, with ratchet	2
524551	Sealing plate, 600 x 300 x 30mm, CR	2
524552	Sealing plate, 1000 x 300 x 30mm, CR	1
528304	Acid proof protection bag for M1	1
533742	Portable case 640 x 470 x 210 type 4	1

M1/6 SET - 6 BAR

THE M1/6 TYPE SET - WITH BELT GUIDING SLITS CONSISTS OF:

PART NUMBER	DESCRIPTION	QUANTITY [pc]
531455	Leak sealing bag, type M1/6 with belt guiding slits	1
531542	Single controller 6 bar, fitting	1
529094	Inflation hose, 10 m, blue with chain and deflation nipple	1
531465	Tensioning and extension belt, 10 m long, red, with ratchet	2
528304	Acid proof protection bag for M1	1
533742	Portable case 640 x 470 x 210 type 4	1

M1/10 SET - 10 BAR

THE M1/10 TYPE SET - WITH BELT GUIDING SLITS CONSISTS OF:

PART NUMBER	DESCRIPTION	QUANTITY [pc]
531456	Leak sealing bag, type M1/10 with belt guiding slits	1
531543	Single controller 10 bar, fitting	1
577351	Inflation hose, 10 m, blue with chain and deflation nipple	1
531465	Tensioning and extension belt, 10 m long, red, with ratchet	2
528304	Acid proof protection bag for M1/10	1
533742	Portable case 640 x 470 x 210 type 4	1

M2 SET - 1.5 BAR



THE M2 TYPE SET - WITH SWIVEL EYES CONSISTS OF:

PART NUMBER	DESCRIPTION	QUANTITY [pc]
60350	Leak sealing bag, type M2 with swivel eyes	1
528873	Foot-operated pump with safety valve 1.5 bar	1
529094	Inflation hose, 10 m, blue with chain and deflation nipple	1
60353	Ratchet belt, 2 m, orange	1
60357	Ratchet belt, 2 m, yellow	1
60354	Fastening belt, 5 m, orange	1
60365	Fastening belt, 5 m, yellow	1
60166	Tensioning and extension belt, 10 m long, yellow, with ratchet	1
60165	Tensioning and extension belt, 10 m long, orange, with ratchet	1
524551	Sealing plate, 600 x 300 x 30 mm, CR	2
524552	Sealing plate, 1000 x 300 x 30 mm, CR	1
525564	Acid proof protection bag for M2	1

TECHNICAL DATA

TYPE	PART NUMBER	DIMENSIONS			WEIGHT	WORKING PRESSURE	SEALING SURFACE DIMENSIONS		SEALING PRESSURE	AIR REQUIREMENT
		LENGTH	WIDTH	HEIGHT			LENGTH	WIDTH		
		[cm]	[cm]	[cm]			[cm]	[cm]		
M1- 1.5 BAR	60043	62	30	2	4.8	1.5	45	23.5	1.4	20
M1/6- 6 BAR	531455	62	30	5	11	6	40	20	5	50
M1/10-10 BAR	531456	62	30	5	11	10	35	15	9	70
M2-1.5 BAR	60350	62	30	2	6.2	1.5	45	23.5	1.4	20

Sealing tubes are used for a fast and temporary leak sealing of pipe bends and difficult-to-access pipe connections.

Easy positioning

Used for every pipe diameter

Stainless steel parts

Perfect for industrial usage



MEDIUM SEALING TUBE SET

THE LARGE SEALING TUBE SET CONSISTS OF:

PART NUMBER	DESCRIPTION	QUANTITY [pc]
575160	Sealing tube 1.5 m, type ST 150	1
575161	Sealing tube 2.5 m, type ST 250	1
575162	Sealing tube 3.5 m, type ST 350	1
576506	Inflation control valve BRASS	1
576566	Inflation hose 10 m EPDM	1
576471	Sealing pad (FKM material)	1
577590	Sealing pad (NBR material)	1
577590	Sealing pad (EPDM material)	1
576510	Deflation valve BRASS	1
523835	Pressure regulator 200/300 bar	1
528871	Portable case 609 x 409 x 140 type 2	1

THE MEDIUM SEALING TUBE SET CONSISTS OF:

PART NUMBER	DESCRIPTION	QUANTITY [pc]
575161	Sealing tube 2.5 m, type ST 250	1
576506	Inflation control valve BRASS	1
576566	Inflation hose 10 m, EPDM	1
576471	Sealing pad (FKM material)	1
576510	Deflation valve BRASS	1
532632	Portable case 470 x 360 x 120 mm type 1	1

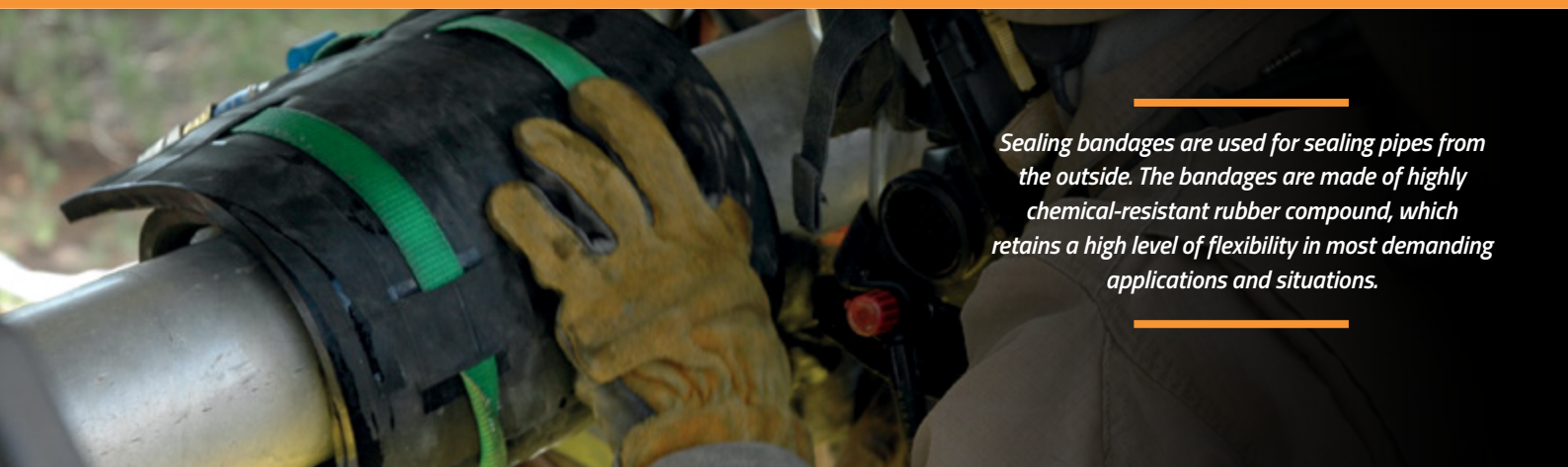
TECHNICAL DATA

TYPE	PART NUMBER	DIMENSIONS		WEIGHT	WORKING PRESSURE	AIR REQUIREMENT
		DIAMETER	LENGTH			
		[cm]	[cm]			
ST 150	575160	2.5	150	1.1	10	8.1
ST 250	575161	2.5	250	1.5	10	13.5
ST 350	575162	2.5	350	1.8	10	18.8



SEALING BANDAGES

3. 8.



Sealing bandages are used for sealing pipes from the outside. The bandages are made of highly chemical-resistant rubber compound, which retains a high level of flexibility in most demanding applications and situations.

Flexible design

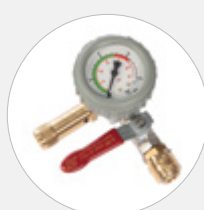
Easy positioning

A wide usage range

Chemical-resistant rubber compound



INFLATION HOSE
10 m WITH CHAIN AND
DEFLATION NIPPLE
529094



SINGLE FITTING
CONTROLLER 1.5 BAR
529663



FOOT PUMP WITH
SAFETY VALVE
1.5 BAR
528873

TECHNICAL DATA

TYPE	PART NUMBER	SIZE USAGE RANGE	DIMENSIONS			WEIGHT	WORKING PRESSURE
			LENGTH	WIDTH	HEIGHT		
		[cm]	[cm]	[cm]	[cm]	[bar]	[bar]
SB1	515713	5 - 8	25	12.5	1	2.1	1.5
SB2	525813	5 - 20	98	12.5	1	3.5	1.5
SB3	525065	5 - 20	98	21.0	1	3.9	1.5
SB4	525066	20 - 45	170	21.0	1	6.7	1.5
SB5	525277	5 - 18	80	25.0	1	4.3	1.5
SB6	514376	5 - 15	65	45.0	1	5.5	1.5
SB7	516042	10 - 35	130	45.0	1	9.1	1.5
SB8	525814	20 - 45	170	45.0	1	11.1	1.5

The vacuum drainage bag seals leaks without using straps. Vacuum bags work well on large storage tanks and wide flat surfaces that can't be strapped. Vacuum sealing drainage bags seal and stick by creating a vacuum, which is why belts are not needed. A vacuum is created by using air-pressure from a high-pressure air source.

Easy positioning

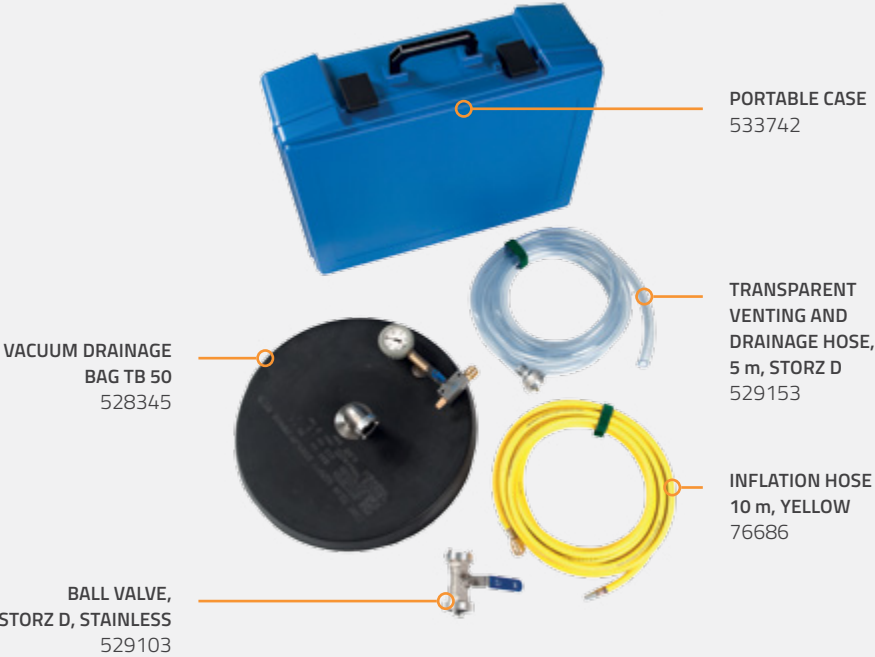
No straps needed

A controlled transfer of liquids

Round shape

TB 50 SET

PART NUMBER	DESCRIPTION	QUANTITY [pc]
528345	Vacuum drainage bag TB 50	1
529103	Ball valve, storz D, stainless	1
529153	Transparent venting and drainage hose, 5 m, storz D	1
76686	Inflation hose 10 m, yellow, system 2.5 bar	1
533742	Portable case 640 x 470 x 210 type 4	1



TECHNICAL DATA

TYPE	PART NUMBER	DIMENSIONS	WEIGHT	WORKING PRESSURE	VACUUM	SEALING SURFACE DIMENSIONS	SEALING SURFACE DIMENSIONS		SEALING PRESSURE	AIR REQUIREMENT
		DIAMETER				DIAMETER	LENGHT	WIDTH		
		[cm]				[cm]	[cm]	[cm]		
TB 50	528345	50	5.4	8	0.85	50/20	10	10	1.4	1.2



DRAINAGE SEALING BAG

3. 10.



Drainage sealing bags are fixed onto tanks with straps. Drainage sealing bags have an inflatable sealing perimeter which stops the leak but still allows venting and a controlled draining of liquid from the tank. Drainage sealing bags are suitable for use with fuels and many other toxic chemicals.

Flexible design

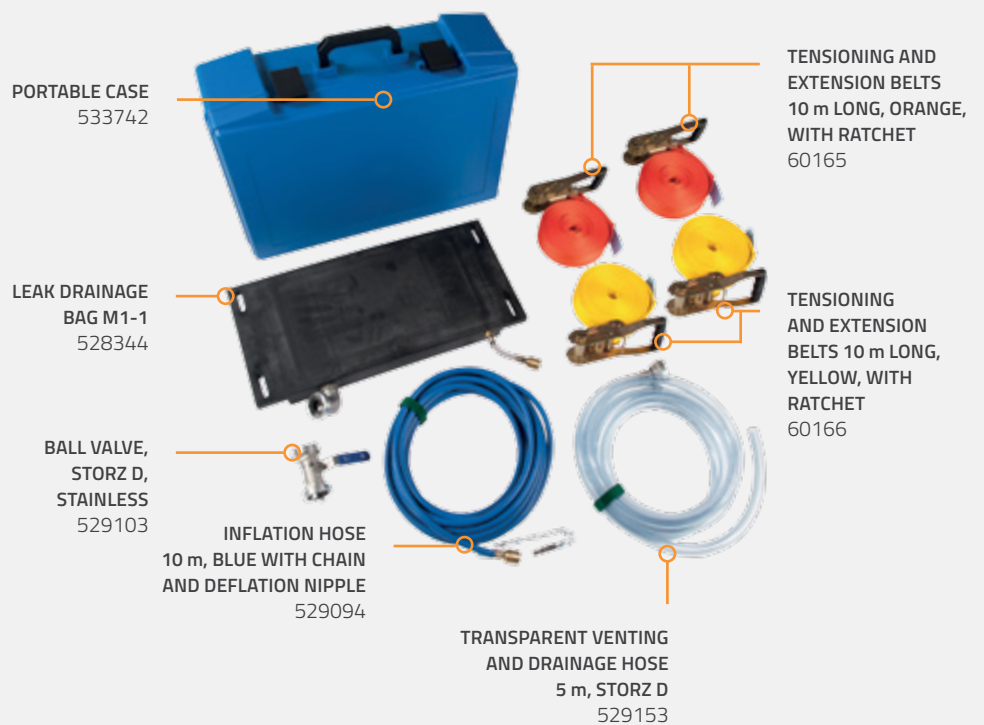
Easy positioning

A controlled transfer of liquids

Chemical-resistant rubber compound

PART NUMBER	DESCRIPTION	QUANTITY [pc]
528344	Leak drainage bag M1-1	1
528873	Foot pump with safety valve 1.5 bar	1
529094	Inflation hose 10 m, blue with chain and deflation nipple	1
60166	Tensioning and extension belts 10 m long, yellow, with ratchet	2
60165	Tensioning and extension belts 10 m long, orange, with ratchet	2
529103	Ball valve, storz D, stainless	1
529153	Transparent venting and drainage hose 5 m, storz D	1
533742	Portable case 640 x 470 x 210 type 4	1

M1-1 SET



TECHNICAL DATA

TYPE	PART NUMBER	DIMENSIONS			WEIGHT	WORKING PRESSURE	SEALING SURFACE DIMENSIONS			SEALING PRESSURE	AIR REQUIREMENT
		LENGTH	WIDTH	HEIGHT			LENGTH	WIDTH	HEIGHT		
		[cm]	[cm]	[cm]			[cm]	[cm]	[cm]		
M1-1	528344	62	30	5.5	10.5	1.5	40	20	3.5	1	10

3. 11.

DRAINAGE PIPE SEALING BAGS

Drainage pipe sealing bags are perfect solution for leakages on pipe connections. Drainage pipe sealing bags have a built-in zipper that allows a simple positioning.

Easy positioning

Flexible sealing sleeves

A controlled transfer of liquids

Special zipping system



TRANSPARENT VENTING AND DRAINAGE HOSE
5 m, STORZ D
529153

TECHNICAL DATA

TYPE	PART NUMBER	DIMENSIONS			WEIGHT	SEALING PRESSURE
		LENGTH	WIDTH	HEIGHT		
		[cm]	[cm]	[cm]	[kg]	[bar]
FL 50	531572	26	5	95	2.6	0.5
FL 80	536352	26	8	95	2.7	0.5
FL 100	552317	26	10	95	2.8	0.5



The mega leak sealing kit is designed for leak containment in the petroleum, chemical and LNG (liquid natural gas) industries. Deploy the kit at chemical processing plants, oil refineries, LNG plant trains, regasification terminals, exploration and drilling platforms, ocean transport vessels, railways and pipeline transport facilities.

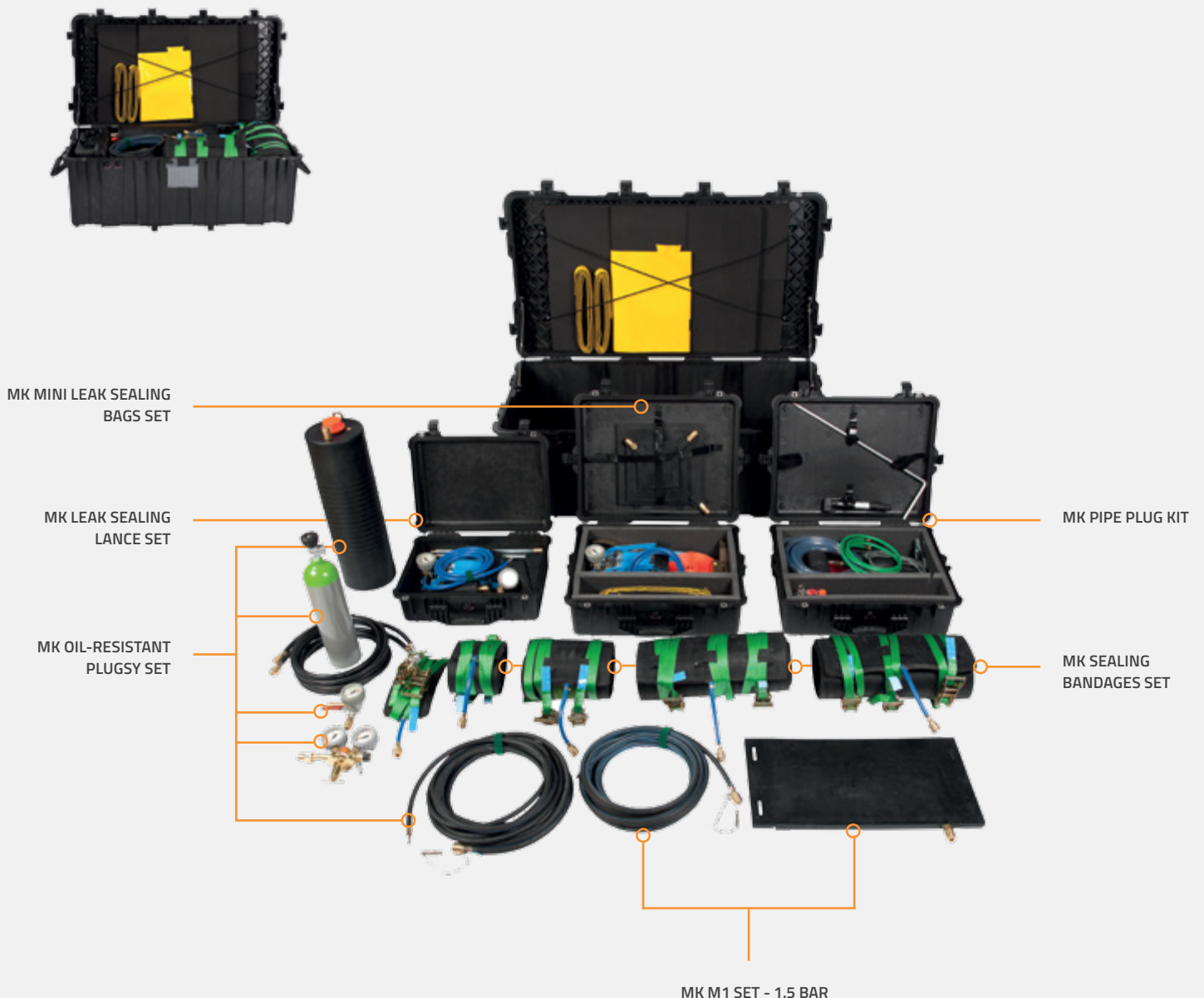
Non-corrosive design

Self-contained kit

Sealed waterproof case

All-in-one solution

MEGA SEALING KIT



THE MEGA SEALING KIT (PART NUMBER: 291253) CONSISTS OF:

This is our standard mega set. Custom-made mega kits are available on request.

CASES:

PART NUMBER	DESCRIPTION	QUANTITY [pc]
577688	Mega black case	1
562160	Medium black case with foam	2
566529	Small black case with foam	1

MK M1 SET - 1.5 BAR

PART NUMBER	DESCRIPTION	QUANTITY [pc]
60043	Leak sealing bag, Type M1 with belt guiding slits	1
529094	Inflation hose, 10 m, blue with chain and deflation nipple	1
60166	Tensioning and extension belts, 10 m long, yellow, with ratchet	1
60165	Tensioning and extension belts, 10 m long, orange, with ratchet	1
524551	Sealing plate, 600 x 300 x 30 mm, CR	2
524552	Sealing plate, 1000 x 300 x 30 mm, CR	2
528304	Acid proof protection bag for M1	1

MK LEAK SEALING LANCE SET

PART NUMBER	DESCRIPTION	QUANTITY [pc]
528386	Wedge-shaped sealing bag type 1	1
528387	Wedge-shaped sealing bag type 2	1
528388	Wedge-shaped sealing bag type 3	1
528389	Cone-shaped sealing bag	1
528618	Push and inflation rod, 35 cm, chain, deflation nipple	1
528619	Push and inflation rod, 35 cm	3
529510	Shut-off unit	1
528873	Foot-operated pump with safety valve 1.5 bar	1

MK MINI LEAK SEALING BAGS SET

PART NUMBER	DESCRIPTION	QUANTITY [pc]
78082	Type T1	1
78096	Type T2	1
78099	Type T3	1
528873	Foot-operated pump with safety valve 1.5 bar	1
60167	Fastening belts, 150 cm long, yellow	2
60169	Fastening belts, 300 cm long, yellow	3

MK SEALING BANDAGES SET

PART NUMBER	DESCRIPTION	QUANTITY [pc]
515713	SB 1 125 x 250 mm	1
525813	SB 2 125 x 980 mm	1
525277	SB 5 250 x 800 mm	1
516042	SB 7 450 x 1300 mm	1
525814	SB 8 450 x 1700 mm	1
576567	Inflation hose EPDM with chain and deflation nipple, 10 m	1

MK PIPE PLUG KIT

PART NUMBER	DESCRIPTION	QUANTITY [pc]
542488	Elliptical Plugy G1 50-80 C	1
542489	Elliptical Plugy G2 80-130 C	1
542490	Elliptical Plugy G3 100-160 C	1
523289	Pneumatic plug type Z1 C	1
523290	Pneumatic plug type Z1 1/2 C	1
523292	Pneumatic plug type Z2/3 C	1
523294	Pneumatic plug type Z3/4 C	1
523296	Pneumatic plug type Z4/6 C	1
523302	Pneumatic plug type S2 C	1
523304	Pneumatic plug type S3/4 C	1
523307	Pneumatic plug type S4/6 C	1
541951	Tyre valve extension hose 1 m	2
551285	Inflation hose 3 m, antistatic	1
541957	Static discharge kit	1
541960	Hand pump - mini	1
541952	Shut-off valve R 1/8"	1
541953	Shut-off valve R 1/2"	1
541958	Bag of corks	1

MK OIL-RESISTANT PLUGSY SET

PART NUMBER	DESCRIPTION	QUANTITY [pc]
576566	Inflation hose 10 m, black	1
567165	CR inflation hose 3 m, black	2
560195	Pressure reducer – 200/300 bar	1
60310	Single fitting controller 2.5 bar	1
526635	Plugsy C 200-400	1
525324	Air cylinder 2 l – 200 bar	1



**FOLLOW
USER MANUAL**

**WEAR PERSONAL
PROTECTIVE EQUIPMENT**





They are used for emergency interception of hazardous liquids or for creating water supplies (fire extinguishing, snowmaking, etc.). As the self-supporting tank begins to fill with liquid, its unique design allows it to automatically become self-supporting. These tanks are strong, light in weight and fold up into a small space. A filled tank can be covered with a cover that prevents unwanted materials from entering the stored fluid.

Self-supporting design

Storage of various liquids

Superb stability

Easy to maintain



STANDARD COLOUR



GREEN RAL 6025

OPTIONAL COLOURS – ON REQUEST



BEIGE RAL 1001



BLACK (ANTISTATIC RUBBER)

MATERIAL

PES (polyester) fabric coated with NBR/PVC provides resistance to UV rays, ozone and other heavy weather conditions.

STANDARD EQUIPMENT – SUPPLIED TOGETHER WITH EACH TANK



COUPLING SYSTEM –
STORZ C SYSTEM

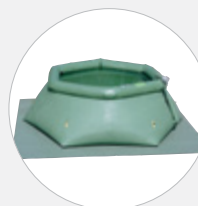


INFLATION HOSE FOR
INFLATABLE COLLAR
(WITH THE CONNECTOR
TO THE COMPRESSOR)

OPTIONAL EQUIPMENT - PURCHASED SEPARATELY



REPAIR KIT



GROUND SHEET



TOP COVER



PACKING BAG



HAND PUMP

NOTE

The number and size of the filling/discharge ports can be adapted to customer requirements.

TECHNICAL DATA

TYPE	PART NUMBER	CAPACITY	DIMENSIONS					WEIGHT	VALVE	NO. OF SIDES
			EMPTY		FULL					
			DIAMETER		DIAMETER		HEIGHT			
			BOTTOM	HEIGHT	BOTTOM	TOP				
		[m³]	[m]	[m]	[m]	[m]	[m]	[kg]	Thread size	
PS 500	518568	0.5	1.3	0.2	1.3	0.7	0.7	12	R 2"	4
PS 1000	518567	1	2.2	0.2	2.2	1.4	0.75	18	R 2"	6
PS 1500	530604	1.5	2.2	0.2	2.2	1.4	0.8	23	R 2"	6
PS 2000	516537	2	2.6	0.2	2.6	1.5	0.85	27	R 2"	6
PS 2500	530605	2.5	2.6	0.2	2.6	1.5	0.9	29	R 2"	6
PS 3000	76489	3	2.5	0.2	2.5	1.7	0.9	32	R 2"	6
PS 4000	530606	4	2.9	0.2	2.9	2	1.1	40	R 2"	6
PS 5000	77789	5	3.1	0.2	3.1	2.2	1.2	45	R 2"	6
PS 6000	510478	6	3.5	0.2	3.5	2.5	1.15	51	R 2"	6
PS 8000	521396	8	4	0.2	4	2.9	1.2	58	R 2"	6
PS 10000	519742	10	4.4	0.2	4.4	3.2	1.2	81	R 2"	8
PS 12000	510479	12	4.6	0.2	4.6	3.5	1	95	R 2"	8
PS 15000	530607	15	5	0.2	5	4	1.2	104	R 2"	8
PS 20000	530608	20	5.7	0.2	5.7	4.4	1.2	122	R 2"	8
PS 25000	530609	25	6	0.2	6	5	1.2	142	R 2"	10
PS 30000	530610	30	6.5	0.2	6.5	5.5	1.2	159	2 × R 2"	10
PS 40000	530611	40	7.5	0.2	7.5	6.2	1.3	202	2 × R 2"	10
PS 50000	530612	50	8.3	0.2	8.3	7	1.3	235	2 × R 2"	12



Transport tanks are closed tanks suitable for transport and storage of various liquids, including water. They are pillow-shaped and highly resistant to chemicals, mineral oils, and industrial water; they can be used in temperatures ranging from -30 °C to +90 °C.

Storage
of various liquids

Transport
of various liquids

A wide choice
of different sizes

Easy
to maintain



STANDARD COLOUR



GREEN RAL 6025

OPTIONAL COLOURS – ON REQUEST



BEIGE RAL 1001



BLACK (ANTISTATIC RUBBER)

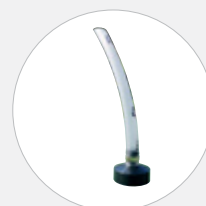
MATERIAL

PES (polyester) fabric coated with NBR/PVC provides resistance to UV rays, ozone and other heavy weather conditions.

STANDARD EQUIPMENT – SUPPLIED TOGETHER WITH EACH TANK



PVC BALL VALVE, SIZES:
R 1", R 2" OR R 4"

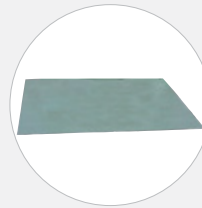


VENT R 2" WITH A
PVC TUBE AND AN
ALUMINUM LID

OPTIONAL EQUIPMENT - PURCHASED SEPARATELY



REPAIR KIT



GROUND SHEET



TOP COVER



PACKING BAG

NOTE

The number and size of the filling/discharge ports can be adapted to customer requirements.

TECHNICAL DATA

TYPE	PART NUMBER	CAPACITY	DIMENSIONS					WEIGHT	VALVE	
			EMPTY		FULL					
			LENGTH	WIDTH	LENGTH	WIDTH	HEIGHT	RUBBER	INFLATION	VENT
		[m³]	[m]	[m]	[m]	[m]	[m]	[m]	[kg]	Thread size
TRL 250	530685	0.25	1.3	1.1	1	0.9	0.4	6	R 1"	R 2"
TRL 500	530686	0.5	1.8	1.1	1.4	0.9	0.5	9	R 1"	R 2"
TRL 800	530687	0.8	1.9	1.5	1.5	1.2	0.6	13	R 1"	R 2"
TRL 1000	530688	1	2.18	1.5	1.9	1.3	0.6	14	R 2"	R 2"
TRL 1500	530689	1.5	2.4	1.87	2.03	1.52	0.65	19	R 2"	R 2"
TRL 2000	530690	2	2.55	1.87	2.14	1.52	0.65	22	R 2"	R 2"
TRL 2500	530691	2.5	3	1.92	2.49	1.41	0.9	25	R 2"	R 2"
TRL 3000	530692	3	3	2.4	2.6	2	1	30	R 2"	R 2"
TRL 4000	530693	4	3.5	2.5	3.13	2.2	1	37	R 2"	R 2"
TRL 4500	560903	4.5	3.7	2.5	3.1	2.2	1	38	R 2"	R 2"
TRL 5000	530694	5	4.4	2.5	3.97	2.2	1	47	R 2"	R 2"
TRL 6000	530695	6	5	2.5	4.17	2.2	1	53	R 2"	R 2"
TRL 7000	530696	7	5.6	2.5	4.97	2.2	1.1	62	R 2"	R 2"
TRL 8000	530697	8	6.2	2.5	5.57	2.2	1.1	69	R 2"	R 2"
TRL 9000	530698	9	6.9	2.5	6.27	2.2	1.1	76	R 2"	R 2"
TRL 10000	530699	10	7.8	2.5	7.17	2.2	1.1	86	R 4"	R 2"
TRL 11000	530700	11	8.5	2.5	7.87	2.2	1.1	94	R 4"	R 2"
TRL 12000	530701	12	9.2	2.5	8.57	2.2	1.1	102	R 4"	R 2"
TRL 19000	502737	19	12.9	2.5	12.2	2.2	1.1	143	R 4"	R 2"



Closed tanks are suitable for storage of various liquids, including water. They are pillow-shaped and equipped with two or more ports, depending on the size of the tank. The middle port on top is intended for venting air, whereas other ports allow filling and emptying of the tank.

**Storage
of various liquids**

**Extra
durable material**

**A wide choice
of different sizes**

**Easy
to maintain**



STANDARD COLOUR



GREEN RAL 6025

OPTIONAL COLOURS – ON REQUEST



BEIGE RAL 1001



BLACK (ANTISTATIC RUBBER)

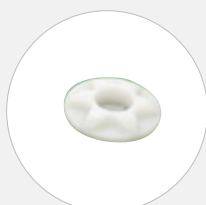
MATERIAL

PES (polyester) fabric coated with NBR/PVC provides resistance to UV rays, ozone and other heavy weather conditions.

STANDARD EQUIPMENT – SUPPLIED TOGETHER WITH EACH TANK



PVC BALL
VALVE,
SIZES:
R 1", R 2"
OR R 4"



VENT R 1"
(UP TO 10 m³)



VENT R 2"
(FROM
10–50 m³)

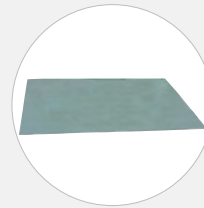


VENT R 2"
(FROM 50 m³)

OPTIONAL EQUIPMENT - PURCHASED SEPARATELY



REPAIR KIT



GROUNDSHEET



TOP COVER



PACKING BAG

NOTE

The number and size of the filling/discharge ports can be adapted to customer requirements.

TECHNICAL DATA

TYPE	PART NUMBER	CAPACITY	DIMENSIONS					WEIGHT	VALVE	
			EMPTY		FULL					
			LENGTH	WIDTH	LENGTH	WIDTH	HEIGHT	RUBBER	INFLATION	VENT
		[m³]	[m]	[m]	[m]	[m]	[m]	[m]	[kg]	Thread size
ZR 250	530702	0.25	1.3	1.1	1.1	0.9	0.4	5	R 1"	R 1"
ZR 500	59652	0.5	1.8	1.1	1.4	0.9	0.5	7	R 1"	R 1"
ZR 800	530703	0.8	1.9	1.5	1.5	1.2	0.6	10	R 1"	R 1"
ZR 1000	59653	1	2.18	1.5	1.9	1.3	0.6	11	R 2"	R 1"
ZR 1500	530704	1.5	2.4	1.87	2.03	1.52	0.65	15	R 2"	R 1"
ZR 2000	63360	2	2.55	1.87	2.14	1.52	0.65	18	R 2"	R 1"
ZR 2500	530705	2.5	2.6	2.2	2.09	1.69	0.9	20	R 2"	R 1"
ZR 3000	51095	3	3	2.4	2.6	2	1	23	R 2"	R 1"
ZR 4000	530706	4	3.5	2.4	3.13	2	1	29	R 2"	R 1"
ZR 5000	74037	5	4.4	2.4	3.97	2	1	34	R 2"	R 1"
ZR 6000	530727	6	5	2.4	4.47	2	1.1	37	R 2"	R 1"
ZR 8000	530707	8	3.8	3.5	3.17	3.07	1.1	47	R 2"	R 1"
ZR 10000	60783	10	4	3.8	3.5	3.33	1.1	54	2 × R 2"	R 2"
ZR 12000	530708	12	4.3	3.8	3.82	3.33	1.2	61	2 × R 2"	R 2"
ZR 15000	530709	15	5	3.8	4.56	3.37	1.2	75	2 × R 2"	R 2"
ZR 20000	530710	20	5.5	4.9	5	4.42	1.3	92	2 × R 2"	R 2"
ZR 25000	530711	25	5.7	5.3	4.96	4.56	1.3	134	2 × R 2"	R 2"
ZR 30000	530712	30	6.1	5.7	5.36	4.96	1.3	154	R 4"	R 2"
ZR 35000	530713	35	6.3	6.1	5.5	5.3	1.4	170	R 4"	R 2"
ZR 40000	530714	40	6.7	6.3	5.9	5.5	1.4	187	R 4"	R 2"
ZR 45000	530715	45	12.8	4.3	12.31	3.82	1.2	208	R 4"	R 2"
ZR 50000	530716	50	7.4	6.7	6.54	5.84	1.5	220	R 4"	R 2"
ZR 60000	530717	60	7.8	7.4	6.94	6.54	1.5	256	2 × R 4"	R 2"
ZR 70000	530718	70	8.8	7.4	7.94	6.54	1.5	288	2 × R 4"	R 2"
ZR 80000	530719	80	8.8	8	7.89	7.09	1.6	312	2 × R 4"	R 2"
ZR 100000	530720	100	10	8.8	9.09	7.89	1.6	390	2 × R 4"	R 2"
ZR 125000	530721	125	11	10	10.09	9.09	1.6	487	2 × R 4"	R 2"
ZR 150000	530722	150	12	10	11.03	9.03	1.7	531	2 × R 4"	R 2"
ZR 200000	530723	200	16.5	10	15.53	9.03	1.7	731	2 × R 4"	R 2"



Drinking water tanks are ideal for emergency water storage, but can be used in many other applications as well.

Certified material
for drinking water storage

A wide choice
of different sizes

Pillow-shaped
design

Easy
to maintain



STANDARD COLOURS



GREEN RAL 6025

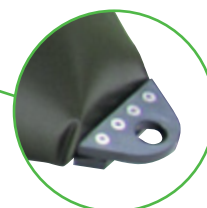
OPTIONAL COLOURS – ON REQUEST



BLUE

MATERIAL

PVC - drinking water
certified PVC



Special corner
brackets

STANDARD EQUIPMENT – SUPPLIED TOGETHER WITH EACH TANK



PVC BALL
VALVE,
SIZES:
R 1", R 2"
OR R 4"



VENT R 1"
(UP TO 10 m³)



VENT R 2"
(FROM
10–50 m³)

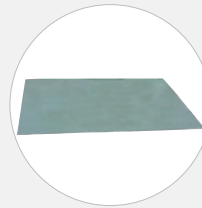


VENT R 2"
(FROM 50 m³)

OPTIONAL EQUIPMENT - PURCHASED SEPARATELY



REPAIR KIT



GROUND SHEET



TOP COVER



PACKING BAG

NOTE

The number and size of the filling/discharge ports can be adapted to customer requirements.

TECHNICAL DATA

TYPE	PART NUMBER	CAPACITY	DIMENSIONS					WEIGHT	VALVE		NO. OF HANDLES
			EMPTY		FULL				INFLATION	VENT	
			LENGTH	WIDTH	LENGTH	WIDTH	HEIGHT				
		[m³]	[m]	[m]	[m]	[m]	[m]	[kg]	Thread size	Thread size	
ZRP 250	534228	0.25	1.3	1.1	1.1	0.9	0.4	4	R 1"	R 1"	4
ZRP 500	536569	0.5	1.8	1.3	1.3	1	0.5	7	R 1"	R 1"	4
ZRP 800	536570	0.8	1.8	1.6	2.4	1.5	0.6	8	R 1"	R 1"	4
ZRP 1000	534226	1	1.8	1.8	1.46	1.46	0.6	9	R 2"	R 1"	4
ZRP 1500	536575	1.5	2.4	1.8	2.03	1.43	0.65	11	R 2"	R 1"	4
ZRP 2000	536576	2	2.5	2	2.04	1.54	0.8	13	R 2"	R 1"	4
ZRP 2500	536577	2.5	2.6	2.2	2.09	1.69	0.9	15	R 2"	R 1"	4
ZRP 3000	536578	3	2.8	2.3	2.23	1.73	1	16	R 2"	R 1"	4
ZRP 4000	536579	4	3	2.7	2.43	2.13	1	20	R 2"	R 1"	4
ZRP 5000	533677	5	3.2	3	2.57	2.37	1.1	24	R 2"	R 1"	4
ZRP 6000	536580	6	2.3	3	2.87	2.37	1.1	27	R 2"	R 1"	4
ZRP 7000	281750	7	3.5	5.4	2	5	0.9	29	R 2"	R 1"	4
ZRP 8000	536581	8	3.8	3.5	3.17	2.87	1.1	33	R 2"	R 1"	4
ZRP 10000	536582	10	4	3.8	3.37	3.17	1.1	38	R 2"	R 1"	4
ZRP 12000	536583	12	4.3	4	3.62	3.32	1.2	43	2 × R 2"	R 2"	4
ZRP 15000	536584	15	4.9	4.3	4.22	3.52	1.2	52	2 × R 2"	R 2"	4
ZRP 20000	536585	20	5.5	4.9	4.56	4.16	1.3	66	2 × R 2"	R 2"	4
ZRP 25000	536601	25	5.7	5.3	4.96	4.56	1.3	103	2 × R 2"	R 2"	4
ZRP 30000	536602	30	6.1	5.7	5.36	4.96	1.3	118	2 × R 2"	R 2"	4
ZRP 35000	536603	35	6.3	6.1	5.5	5.3	1.4	131	R 4"	R 2"	4
ZRP 40000	536604	40	6.7	6.3	5.9	5.5	1.4	143	R 4"	R 2"	4
ZRP 45000	536610	45	7	6.7	6.2	5.9	1.4	159	R 4"	R 2"	4
ZRP 50000	536611	50	7.4	6.7	6.54	5.84	1.5	168	R 4"	R 2"	4
ZRP 60000	536612	60	7.8	7.4	6.94	6.54	1.5	195	2 × R 4"	R 2"	4
ZRP 70000	536613	70	8.8	7.4	7.94	6.54	1.5	220	2 × R 4"	R 2"	4
ZRP 80000	536614	80	8.8	8	7.89	7.09	1.6	238	2 × R 4"	R 2"	4
ZRP 100000	536615	100	10	8.8	9.09	7.89	1.6	297	2 × R 4"	R 2"	4
ZRP 125000	536616	125	11	10	10.09	9.09	1.6	371	2 × R 4"	R 2"	4
ZRP 150000	536617	150	12	10	11.03	9.03	1.7	405	2 × R 4"	R 2"	4
ZRP 200000	536618	200	16.5	10	15.53	9.03	1.7	556	2 × R 4"	R 2"	4

Mobile decanting units are suitable as preventive protection from hazardous liquid spills. An empty mobile decanting unit is placed under the object, from which hazardous liquids will be pumped. The inflatable collar is inflated by compressed air or a hand pump.

A wide range
of applications

Simplicity

Versatile
usability

Low
weight



MATERIAL

PVC

STANDARD COLOUR



GREEN RAL 6025

NOTE

The number and size of the filling/discharge ports can be adapted to customer requirements.

OPTIONAL COLOURS – ON REQUEST



BEIGE RAL 1001



BLACK (ANTISTATIC RUBBER)

STANDARD EQUIPMENT – SUPPLIED TOGETHER WITH EACH TANK



INFLATION HOSE FOR
INFLATABLE COLLAR (WITH
THE CONNECTOR TO THE
COMPRESSOR)

OPTIONAL EQUIPMENT – PURCHASED SEPARATELY



HAND PUMP

TECHNICAL DATA

TYPE	PART NUMBER	CAPACITY	DIMENSIONS (INNER SIDE)					WEIGHT	VALVE		NO. OF HANDLES
			EMPTY		FULL				RUBBER	INFLATION	
			LENGTH	WIDTH	LENGTH	WIDTH	HEIGHT				
			[m³]	[m]	[m]	[m]	[m]	[m]			
MP 450	553192	0.45	1.5	1.5	1.5	1.5	0.2	15	R 1"	R 1"	4
MP 800	76103	0.8	2.5	2	2.5	2	0.2	20	R 1"	R 1"	4
MP 1000	530613	1	3	2	3	2	0.2	23	R 1"	R 1"	4
MP 1500	76102	1.5	3.5	2.5	3.5	2.5	0.2	30	R 2"	R 1"	4
MP 2000	530614	2	4	3	4	3	0.2	39	R 2"	R 1"	4
MP 3000	530615	3	5	3.5	5	3.5	0.2	52	R 2"	R 1"	4
MP 4000	73157	4	7	3.5	7	3.5	0.2	69	R 2"	R 1"	4
MP 5000	79358	5	8.5	3.5	8.5	3.5	0.2	82	R 2"	R 1"	4
MP 6000	60773	6	10	3.5	10	3.5	0.2	95	R 2"	R 1"	4
MP 7000	70053	7	12	3.5	12	3.5	0.2	113	R 2"	R 1"	4
MP 10000	530616	10	17	3.5	17	3.5	0.2	156	R 2"	R 1"	4
MP 12000	530617	12	20	3.5	20	3.5	0.2	182	R 2"	R 1"	4



The berm unit is designed for catching spills of various fluids. It prevents spillages on the ground and in the environment. Berm units can also be used for decontamination. Their advantages are simplicity, versatile usability, low weight and imaginative ways of folding.

A wide range of applications

Simplicity

Versatile usability

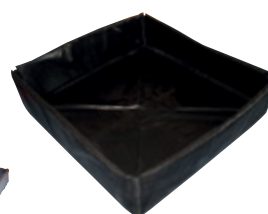
Low weight

STANDARD COLOUR

● BLACK RAL 9005

MATERIAL

PVC



Folded berm

TECHNICAL DATA: BERM – MINI SIZES

TYPE	PART NUMBER	CAPACITY	DIMENSIONS		
			LENGTH	WIDTH	HEIGHT
		[l]	[cm]	[cm]	[cm]
BERMINI 45	565865	45	60	60	12.5
BERMINI 100	549910	100	100	100	10
BERMINI 200	553288	200	100	100	20

TECHNICAL DATA: BERM – SMALL SIZES

TYPE	PART NUMBER	CAPACITY	DIMENSIONS		
			LENGTH	WIDTH	HEIGHT
		[l]	[cm]	[cm]	[cm]
BERM BS 151	553713	225	150	150	10
BERM BS 152	553715	450	150	150	20
BERM BS 201	579648	400	200	200	10
BERM BS 202	579650	800	200	200	20
BERM BS 301	553716	900	300	300	10
BERM BS 302	553718	1800	300	300	20

TECHNICAL DATA: BERM – MEDIUM SIZES

TYPE	PART NUMBER	CAPACITY	DIMENSIONS			NO. OF SUPPORTING ANGLES
			LENGTH	WIDTH	HEIGHT	
		[l]	[cm]	[cm]	[cm]	[pc]
BERM BM 5	552841	6000	500	400	30	22
BERM BM 8	552842	9000	800	400	30	30
BERM BM 12	552843	14000	1200	400	30	40
BERM BM 20	552846	24000	2000	400	30	58



Helicopter onion tanks (HOT) are designed for intercepting, decanting and storing of liquids (water, process water) in the event of accidents, interventions by fire-fighting teams and in other situations. The helicopter onion tank is adapted to capture the water by means of special fire-fighting bag.



Self-supporting design

Storage of various liquids

Superb stability

Easy to maintain



STANDARD COLOUR



ORANGE

MATERIAL

PVC

STANDARD EQUIPMENT – SUPPLIED TOGETHER WITH EACH TANK



PVC BALL VALVE,
SIZES: R 1", R 2"
OR R 4"

NOTE

The number and size of the filling/discharge ports can be adapted to customer requirements.

TECHNICAL DATA

TYPE	PART NUMBER	CAPACITY	DIMENSIONS			WEIGHT
			FULL			
		BOTTOM	TOP	HEIGHT	PVC	
		[m³]	[m]	[m]	[m]	[kg]
HOT 12	282033	12	3.6	2.3	1.7	43
HOT 24	579468	24	5	3.3	1.7	67



1. GENERAL CONDITIONS

- 1.1. These warranty conditions apply as of 30 June 2014 for Environmental Protection and Rescue Programme products, manufactured by Savatech (Products). If any provision of this warranty conditions would be contrary to any mandatory legal provisions in any particular jurisdiction, such provision shall apply to a maximum extent as provided for by such mandatory legal provisions.
- 1.2. Products which may be sold by Savatech Environmental Protection and Rescue Programme but are not manufactured by it are not covered by this warranty and are sold exclusively with warranties, if any, by their original manufacturer.

2. MANAGEMENT OF THE PRODUCTS

- 2.1. In order to claim a remedy pursuant to this warranty, purchaser must conform to instructions for management of the Products which are available on:

<http://www.savatech.com/Manuals/index.htm>
www.savatech.eu/environmental-protection-and-rescue/manuals

3. WARRANTY

- 3.1. Savatech warrants to the purchaser that for the period of twelve (12) months as of delivery of the Products, such Products shall be free from defects in material and workmanship, subject to normal and management of the Products, including, among others, proper storage. For high pressure lifting bags, the warranty period amounts to thirty-six (36) months.
- 3.2. This warranty shall be in lieu of any other warranties, express or implied, including, but not limited to, any warranty of merchantability or fitness for a particular purpose.

4. EXCLUSION OF WARRANTY

- 4.1. Warranty shall be excluded in cases where the Products have not been used for the ordinary purpose or have been subject to abnormal conditions such as, but not limited to misuse, mishandling (such as, but not limited to, cuts, tears, vandalism, fire, wilful destruction, improper installation and/or improper maintenance, misapplication), use of unauthorized components or attachments or if adjustments or repairs have been performed by anyone other than Savatech or its authorized agents.
- 4.2. Warranty shall also be excluded and Savatech shall not be held liable in case of force majeure circumstances, such as, but not limited to:
 - war or threat of war, sabotage, insurrection, riots or requisition;
 - all laws, restrictions, regulations, by-laws, prohibitions or any other measures by the governmental, parliamentary or local bodies;
 - import and export regulations or embargo;
 - strikes, lock-outs or other industrial measures or trade disputes (if including Manufacturer's employees or third party);
 - difficulties with supply of raw materials, work force, fuel, parts or machinery;
 - power blackout, break of machinery.

- 4.3. Savatech shall not be held liable for any deficiencies in Products manufactured according to drawings, designs, project drafts and/or specifications provided by the purchaser.
- 4.4. Ordinary wear and tear is not covered by this warranty.

5. MAKING A WARRANTY CLAIM

- 5.1. The Purchaser is obliged to take delivery of the Products and perform an ordinary inspection of the Product upon delivery.
- 5.2. Any claim by the purchaser with reference to the Products shall be deemed waived unless submitted in writing to Savatech within the earlier of (I) eight days as of the discovery of the defect, or (II) twelve months as of the date of delivery of the Products or thirty-six (36) months as of delivery of high pressure lifting bags. Discovery of the defect is deemed to have occurred when a defect could have reasonably been detected by the purchaser.
- 5.3. Claim must at least contain the following data:
 - part number,
 - serial number,
 - description of defect,
 - and must be substantiated by adequate evidence, such as pictures, etc. Upon request, Savatech must be allowed to inspect the Product.
- 5.4. To obtain performance under this warranty, any products suspected of having a manufacturing defect in materials or workmanship shall be returned freight prepaid for inspection to SAVATECH d.o.o., Environmental Protection and Rescue Programme, Škofjeloška c. 6, 4000 Kranj, Slovenia.

6. REMEDIES

- 6.1. Savatech shall decide on a claim within forty -five days after receiving a complete documentation and Product pursuant to art 5.
- 6.2. Providing Savatech acknowledges the claim as justified, it shall, at its discretion, either:
 - repair the Product,
 - replace those components of the Product which are defective,
 - replace the Product, if repair is not possible or reasonable,
 - reimburse the consideration for the Product or its components which are defective.
- 6.3. Whenever Savatech repairs or replaces the Product at its expense or reimburses the purchase price, it shall reimburse the distributor or the purchaser (depending on each case), with a credit note, the same surface freight amount the distributor or the purchaser had when returning the Product to the Manufacturer.
- 6.4. Remedies pursuant to this article 6 shall constitute the sole and exclusive remedy in the event of a breach of warranty. For the avoidance of doubt, Savatech shall not be liable for any incidental, consequential and/or non-pecuniary damages or damages having a comparable effect.

7. CLOSING PROVISIONS

- 7.1. No statement or action by Savatech, whether express or implied, other than set forth herein, shall constitute a warranty.



We are a division of Savatech d.o.o. within the ČGS Group. We manufacture and sell rubber products for environmental protection and rescue operations and industrial use. Our growing division was established more than thirty years ago and is constantly striving to meet our customer's current and future needs and expectations.

**Knowledge
and experience**

**Professional
service**

**Quality
products**

**A partner
to rely on**

KNOWLEDGE AND EXPERIENCE

Thirty years of experience and knowledge, investment in new technology, team-work and working closely with our business partners, have enabled us to develop new and exciting products and to continuously improve our existing product range.

QUALITY PRODUCTS

When assessing quality of our products we carefully consider a number of criteria including environmental suitability, ease of use, design, safety, reliability, and packaging. Our production facilities are certified to the ISO 9001 and ISO 14001 standards.

PROFESSIONAL SERVICE

A professional but caring approach, flexibility and quick delivery times combined to provide the ideal service in support of our quality product range.

A PARTNER TO RELY ON

We understand the value of long-term partnership. Our aim is to develop trusting relationships, which foster success and bring benefits to both our partners and ourselves.

QUALITY CERTIFICATES

ISO 9001
ISO/TS 16949
ISO 14001
OHSAS 18001
EN 13731
GOST R 50982-2009
CNBOP

