



# VACUUM GRIPPERS





Family owned, **JOULIN** invented the foam vacuum gripper over 50 years ago; we continue to pioneer advances in vacuum technology today.

Whether you are picking a complete layer, partial layer or single part, the **JOULIN** foam gripper automatically senses and closes the check valves in areas without product, allowing the same gripper to be used with no additional set up or re-programming.

From grippers to complete turnkey vacuum handling systems, Joulin is flexible and offers a quick response to supply the best solution for you.

With manufacturing and design facilities in Europe and the USA, see for yourself why 60 countries and counting trust **JOULIN** for their handling projects.

# Contents



<b>Joulin Innovative Solutions</b>	<b>2</b>
No adjustment	2
All types of surface	2
Versatile	2
<b>Joulin Benefits</b>	<b>3</b>
Patented Wave System™	3
GripTech™ software	3
Worldwide	3
Manufacturers	3
<b>Standard Products</b>	<b>4</b>
Plug & Pick	4
Value grippers	4
Bag handler	4
Palletizer pro	4
<b>Timber Gripper</b>	<b>5</b>
From the gripper	5
To the frame	5
To complete gantry robots	5
<b>Joulin Custom Grippers</b>	<b>6</b>
Independant vacuum zones	6
Multiple vacuum sources	6
No filter	6
Simple installation and low maintenance	6
Rotation of parts	6
50 years of experience	6
<b>Examples of installations</b>	<b>7</b>
Examples	7





# JOULIN : Innovative solutions



## NO ADJUSTMENT

**JOULIN Foam Grippers** can pick boxes, products, slip sheets and pallets without making adjustments to the gripper.



## ALL TYPES OF SURFACE

Cinder blocks, bricks, timber (wet or dry), cans, open top jars, pails, boxes, twisted or uneven layers, porous parts, shrink wrapped parts, smooth or rough surfaces...



## VERSATILE

Whether you are picking a complete layer, partial layer or a single part, the **JOULIN Foam Gripper** automatically senses and closes the check valves in areas without product, allowing the same gripper to pick one part or a full layer.





# JOULIN Benefits



## Patented Wave System™

JOULIN'S patented, sequential way of operating the valves allows our grippers to be energy efficient while maintaining a high tolerance to dirt and fast robotic movements.

The **JOULIN** Wave System can result in up to 50% energy savings!



## GripTech™ Software

JOULIN'S GripTech Software was created from our extensive database of product development over 50 years. This exclusive proprietary software brings a level of value and expertise that is unmatched in the industry.

GripTech offers quick design and quick delivery.



**YOUR  
PROJECT**



## Worldwide

JOULIN is the only Foam Gripper supplier with two manufacturing and design facilities. Domestic manufacturing and shipping means savings to you !



## Manufacturing

JOULIN uses the most modern CNC equipment and 3D CAD software. Our capabilities and manufacturing facilities in the U.S. and Europe deliver quality, fast turnaround, and cost effectiveness.



# Standard Products

## MANY OPTIONS AND ACCESSORIES AVAILABLE

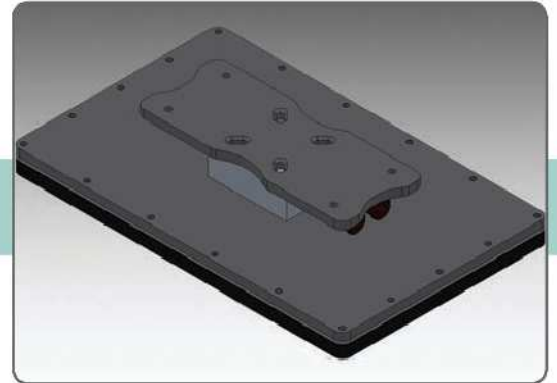
For more information, please download the brochure at [www.joulin.com](http://www.joulin.com)

### VALUE GRIPPERS :

Best value foam gripper to pick all products which are not possible with standard vacuum cups. Porous, twisted, rough, grooved, etc...

Designed optimizing internal volume to reach a fast cycle time.

Self-contained, powered by ejectors, with attachment plate included.

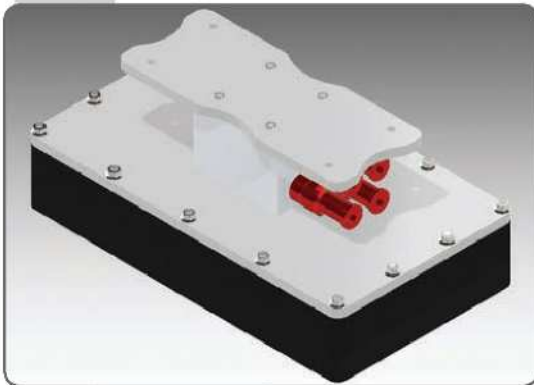


### BAG HANDLER :

For all types of bags. Full surface contact with special frame design optimizing flow and maintaining a constant vacuum capacity even with soft bags.

Self-contained, powered by ejectors, with attachment plate included.

High lifting capacity.



### PLUG & PICK :

Designed, engineered and built ready for installation. Self contained, powered by ejectors, rugged and not affected by dust.

Power remains constant whether picking a single part or an entire layer.

Patented Wave System™ saves up to 50% of energy.



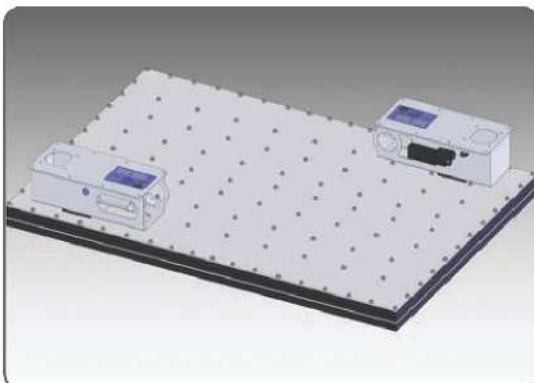
### PALLETIZER PRO :

A full range of grippers to pick a complete layer of products without adjustments. Different valve patterns to fit your application and maximize production.

Optimized and proven gripper with a quick delivery.

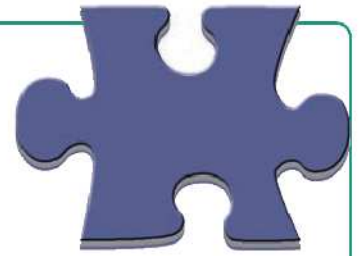
Available with patented Foam Valves and/or Wave System™.

Accessories and available attachments providing a complete turn key End Of Arm Tooling.





# Timber Grippers



**JOULIN**, a world leader in timber handling systems, offers everything from **grippers** to **complete gantry robots**. With over 50 years experience in the timber industry, we know how to make rugged grippers that are not sensitive to saw dust, moisture, sap, splinters, etc...



## FROM THE GRIPPER

### NO FILTER

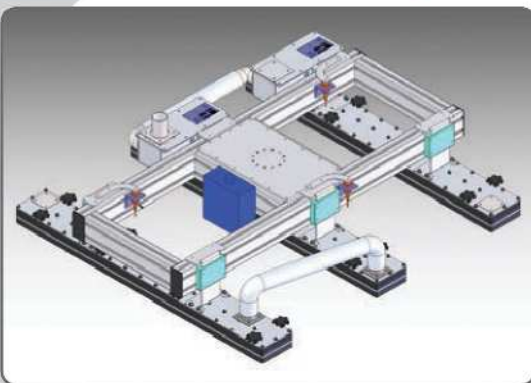
**JOULIN** grippers are the only vacuum systems that do not require filters.

The patented check valve design has tolerance built in to allow dust particles to pass through the gripper :

- ⇒ Rough, dry or green timber
- ⇒ Molded parts
- ⇒ Complete house wall panels
- ⇒ Pallets
- ⇒ Panels
- ⇒ Heavy beams, ...



## TO THE FRAME



- ⇒ As narrow as 20 mm products,
- ⇒ Wide range of standard products,
- ⇒ Easy and inexpensive to manufacture custom grippers to fit your needs,
- ⇒ Many options available,
- ⇒ Attachments to fit your robot or lifter,
- ⇒ Short delivery time.

## TO COMPLETE GANTRY ROBOTS



From 200 kg (400 Lbs) to 5000 kg (10,000 Lbs) capacity standard gantry robots.

State of the art controls with custom programs and interactive touch screen panels.

Many configurations and options to fit your applications.





# JOULIN Custom Grippers



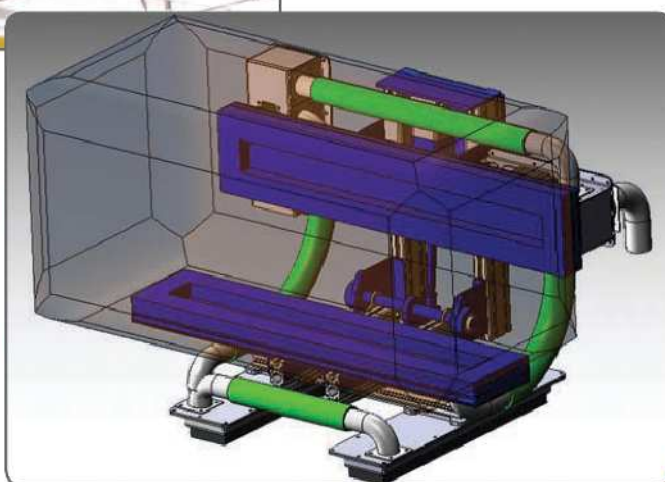
**JOULIN** designs and manufactures complete Vacuum Systems.

Designing systems that others will not attempt. Providing custom grippers to complete vacuum systems.

**VACUUM SOLUTIONS ARE OUR SPECIALITY**

TEST GRIPPERS

PROTOTYPES



ACCESSORIES

OPTIONS

## INDEPENDENT VACUUM ZONES

Pick and Release products individually with available zone control modules.

## MULTIPLE VACUUM SOURCES

**JOULIN** grippers can be powered with a variety of vacuum sources.

## SIMPLE INSTALLATION AND LOW MAINTENANCE

Simple, durable design means the **JOULIN** is easy to install and requires little maintenance.

## ROTATION / RE-ORIENTATION OF PARTS

The **JOULIN** may be rotated horizontally and vertically while holding parts.

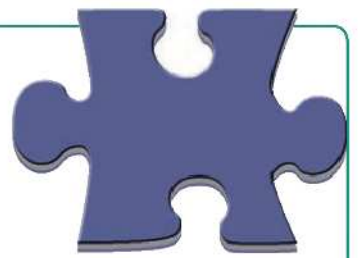
## 50 YEARS OF EXPERIENCE

**JOULIN** has thousands of successful applications in the field. From **timber** to **food** to **pharmaceuticals**, we have provided effective handling solutions for every industry and we will help you be more productive.





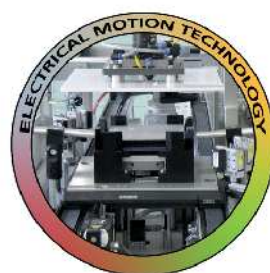
# Examples of Installations



Discover how Joulin, a world leader in vacuum handling systems, can improve your productivity







*We look forward to your application.*



### **LDA Belgium**

Hoge Buizen 53  
1980 Eppegem  
Belgium

Tel. +32 (0)2-266 13 13

Mail: [LDA@LDA.be](mailto:LDA@LDA.be)

[www.LDA.be](http://www.LDA.be)