

**canfield connector**  
 8510 Foxwood Court  
 Youngstown, Ohio 44514  
 (330) 758-8299 Fax: (330) 758-8912  
 www.canfieldconnector.com

## SERIES 7000

## REED AND ELECTRONIC SENSORS FOR 2" TO 8" BORE TIE ROD CYLINDERS OR 3/4" TO 4" ROUND CYLINDERS

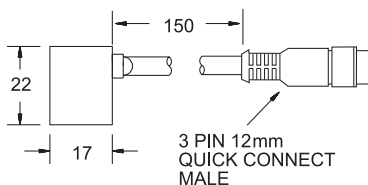
### General Description

The Canfield Series 7000 proximity sensors are used to sense position on cylinders. They accommodate 2 to 8 inch bore tie rod cylinders or 3/4 to 4 inch round cylinders. This proven design is rugged yet cost effective. The Series 7000 boasts the largest number of custom circuits to match applications found in the market. Examples include; 1 or 4 Amp reed switches, normally open, normally closed or SPDT switch types, reed or electronic sensing elements in the same package style, and the industry's first 120 VAC Hall sensor. A wide range of enclosures and connector options are available. To reduce stocking requirements, two clamp options feature a self-adjusting clamp for NFPA and other tie rod cylinders from 2 to 8 inch bore. Another clamp option features a band clamp from 3/4 to 4 inch round cylinders.

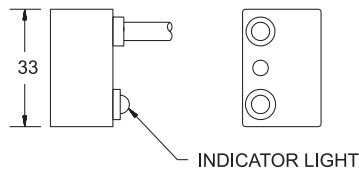
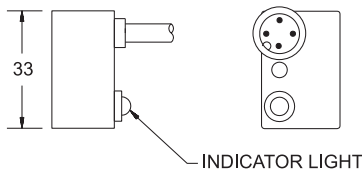
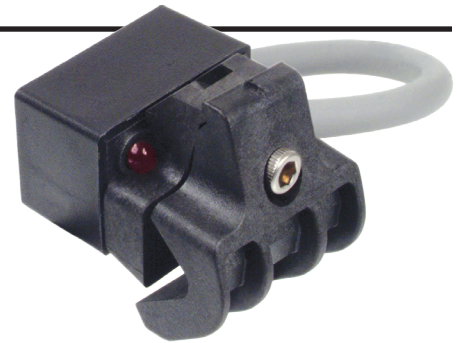
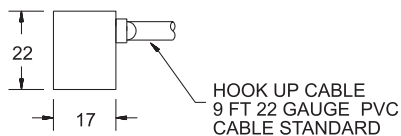
### Dimensional Data

ALL DIMENSIONS ARE IN MILLIMETERS UNLESS OTHERWISE NOTED

#### 12mm Quick Connect Style 5



#### Standard Cable Module (9 ft) Style 0

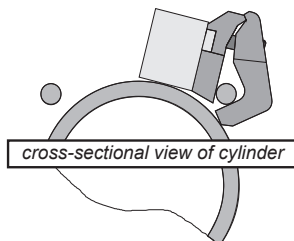


Consult factory for available versions listed by Canadian Standards Association for use with certified electrical equipment.

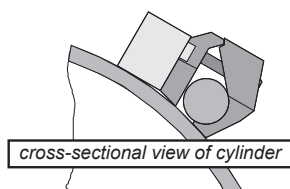
### Clamp Styles

(Standard switch shown below. Mix and match with switch styles)

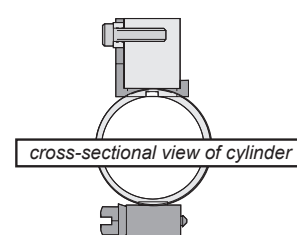
#### Universal 2" to 6" Bore NFPA Tie Rod



#### 6" to 8" Bore NFPA Tie Rod



#### 3/4" to 4" Round Cylinder



### Technical Data

- Temperature Range: Operational from -20° to +80°C.
- Shock: Operational up to 30G (11 ms.) reeds only. Not applicable for electronics.
- Vibration: Operational up to 20 G (10 - 55Hz) reeds only. Not applicable for electronics.
- Sensitivity and orientation: 85 gauss parallel minimum required for proper operation, as measured on sensor surface. Size of sensing area depends on size and strength of magnet and thickness of cylinder wall.

### Features

- One switch for a majority of voltages and cylinder sizes
- 2" to 6" bore, 6" to 8" bore or 3/4" to 4" round cylinders
- Wash down compatible NEMA 6 (most versions)
- Materials: Ultem®, Nylon, PVC wire and stainless steel
- CSA approved versions
- "Floating" clamp
- Surge suppression
- Compatible with IS (Intrinsically Safe) barriers

## Ordering Information

### Clamp Style

- 0 - Universal tie rod clamp 2" to 6" bore
- 1 - Round cylinder bracket
- 2 - Round cylinder 3/4" to 1 3/4" bore
- 3 - Round cylinder 1 9/16" to 2 1/2" bore
- 4 - Round cylinder 2 5/16" to 3 1/4" bore
- 5 - Round cylinder 3 1/16" to 4" bore
- 9 - 5/8" tie rod clamp 6" to 8" bore

### Connector Style

- 0 - Standard cable module (9 ft)
- 5 - 12mm quick connect male\*

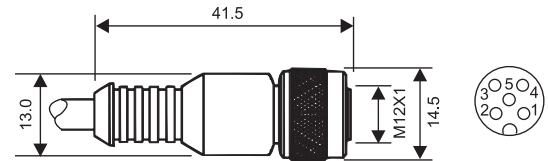
\*Mates with cordset RC12S-F0M030120 (2m) or RC12S-F0M030150 (5m) shown at right.

7 1 0 -  0 0 -

12mm female molded locking connector (3 pole)

250VAC/DC 4 Amps max.

ALL DIMENSIONS ARE IN MILLIMETERS UNLESS OTHERWISE NOTED



Brown = Pin 1  
Blue = Pin 3  
Black = Pin 4  
N/C = Pin 2  
N/C = Pin 5

Order part number

RC12S-F0M030120 (2m length)  
RC12S-F0M030150 (5m length)

Type	Description	Function	Switching Voltage	Switching Current	Switching Power	Switching Speed	Voltage Drop
01	Reed Switch, 2 Wire	Normally Open SPST	0 - 240V AC/DC 50/60 Hz	1 Amp max.	30 Watts max.	0.6 ms operate 0.05 ms release	0 Volts
04	Reed Switch, MOV, LED, 2 Wire	Normally Open SPST	5 - 240V AC/DC 50/60 Hz	1 Amp max. .005 Amps min.	30 Watts max.	0.6 ms operate 0.05 ms release	3 Volts
05	Reed Switch, 2 Wire	Normally Closed SPST	0 - 120V AC/DC 50/60 Hz	1 Amp max.	20 Watts max.	1.0 ms operate 0.02 ms release	0 Volts
06	Reed Switch, LED, 3 Wire	Single Pole, Double Throw	5 - 120V AC/DC 50/60 Hz	1 Amp max. .005 Amps min.	20 Watts max.	1.0 ms operate 0.02 ms release	3Volts/load1 0Volts/load2
09	Reed Switch, MOV, LED, 2 Wire	Normally Closed SPST	5 - 120V AC/DC 50/60 Hz	1 Amp max. .005 Amps min.	20 Watts max.	1.0 ms operate 0.02 ms release	3 Volts
15	AC Electronic Sensor for Reed Magnets, LED, 3 Wire	Normally Open TRIAC output	12-24 VAC	600 mA max. 5 Amps Inrush	15 Watts max.	1.5 µs operate 0.5 µs release	1 Volt
16	AC Electronic Sensor for Reed Magnets, LED, 3 Wire	Normally Open TRIAC output	120 VAC	600 mA max. 5 Amps Inrush	72 Watts max.	1.5 µs operate 0.5 µs release	1 Volt
21	Reed Switch, MOV, 2 Wire	Normally Open TRIAC output	10 - 240 VAC 50/60 Hz	4 Amps max. 50 Amps Inrush	100 Watts max.	0.6 ms operate 0.05 ms release	1 Volt
23	Reed Switch, MOV, LED, 3 Wire	Normally Open TRIAC output	10 - 50 VAC 50/60 Hz	4 Amps max. 50 Amps Inrush .005 Amps min.	100 Watts max.	0.6 ms operate 0.05 ms release	1 Volt
24	Reed Switch, MOV, LED, 3 Wire	Normally Open TRIAC output	24 - 240 VAC 50/60 Hz	4 Amps max. 50 Amps Inrush .005 Amps min.	100 Watts max.	0.6 ms operate 0.05 ms release	1 Volt
25	Reed Switch, MOV, 2 Wire	Normally Closed TRIAC output	10-120 VAC 50/60 Hz	4 Amps max. 50 Amps Inrush	100 Watts max.	0.6 ms operate 0.05 ms release	1 Volt
29	Reed Switch, MOV, LED, 3 Wire	Normally Closed TRIAC Output	10-120 VAC 50/60 Hz	4 Amps max. 50 Amps Inrush .005 Amps min.	100 Watts max.	06 ms operate 0.05 ms release	1 Volts
31	Electronic for Reed Magnet, LED & Sourcing, 3 Wire	Normally Open PNP	6 - 24 VDC	1 Amp max.	24 Watts max.	1.5 µs operate 0.5 µs release	0.5 Volts
32	Electronic for Reed Magnet, LED & Sinking, 3 Wire	Normally Open NPN	6 - 24 VDC	1 Amp max.	24 Watts max.	1.5 µs operate 0.5 µs release	0.5 Volts

Each switch supplied with clamp assembly

For convenience and faster shipping, this series is available in Can-Paks.



### Ordering Example:

710-000-004

Universal tie rod clamp, Standard cable, reed switch, lighted, MOV surge suppression, normally open, 5 - 240V AC/DC 50/60 Hz