



*Composants pour applications
alimentaire & pharmaceutique*



Solutions for Life



Clean
Safe

Durable solutions

LDA – Industrial Food Grade Products

ERD stainless steel electric actuators are IP69k rated and are washdown ready.

The all stainless steel ERD actuator with integrated motor in protective enclosure (ERD-SS2) accommodates both servo (23-frame) and stepper (NEMA 17 and NEMA 23-frame) motors. Combine any ERD-SS2 with the Tolomatic ACS servo or stepper drive and get a complete motion control system with high performance at a very competitive price.

- 3 body sizes
- Ball and acme screw choices
- Force/thrust capabilities up to 500 lbf (2.2 kN)
- Stroke lengths up to 24 inches (610 mm)
- Choice of stepper and servo drive/controller and motor solutions
- Clean-in-place compatible
- Simplifies and lowers cost of machine design by eliminating protective guards around standard actuators

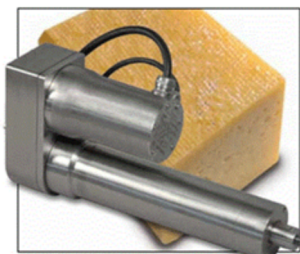


ERD Hygienic (3A/USDA approved) Electric Actuators

ERD hygienic electric actuators are approved by 3A and USDA for food and beverage applications.

Tolomatic's line of hygienically designed all stainless steel electric actuators offer up to 7868 lbf (35 kN) and they are the perfect solution for food and beverage applications where higher forces are required for pressing, pumping, cutting or slicing. Use the Tolomatic Your Motor Here® database to select from a wide variety of stainless steel motor manufacturers for a complete all stainless package.

- 3 body sizes
- Ball, acme and roller screw choices
- Force/thrust capabilities up to 7,868 lbf (35 kN)
- Stroke lengths up to 39.4 inches (1 m)
- IP69K with all stainless steel construction is standard
- USDA and 3A approved hygienic option for over food operation
- Standard 15-day built-to-order shipping
- Clean-in-place compatible
- Simplifies and lowers cost of machine design by eliminating protective guards around standard actuators



www.LDA.be - LDA@LDA.be
+32(0)2- 266 13 13

Bimba Repairable Stainless

Bimba's repairable stainless steel cylinders offer a corrosion resistant design that is ideal for washdown applications and is designed specifically to reduce sharp edges and corners and provide a smooth transition from end cap to cylinder body. Tapped holes are provided to allow easy mounting of USDA approved secondary wiper retainers as an option.

- Bore sizes: 1-1/2", 2", 2-1/2", 3-1/4", 4", 5", 6", 8"
- Nitrile rod seal is pressure activated and wear compensating for long life
- Lubricant: Food grade (H1) grease
- Designed for maximum corrosion resistance
- Maximum Operating Pressure: 200 PSI
- External secondary wiper meets USDA recommendations



Original Line® All Stainless Steel

The "Blue and Improved" all stainless steel Original Line® cylinder utilizes permanent FDA approved grease lubrication. Design enhancements have more than doubled the anticipated service life of these cylinders, which are perfect solutions for applications in food processing, packaging, medical, pharmaceutical, or marine industries where wash down solutions and corrosives are present.

- Bore sizes: 5/16", 7/16", 9/16", 3/4", 7/8", 1-1/16", 1-1/4", 1-1/2", 1-3/4", 2", 2-1/2", 3"
- Corrosion resistant stainless steel end caps
- Urethane rod wiper limits ingress of application matter/chemical solutions into cylinder
- PTFE based rod and pivot bushings
- Blue and Improved design doubles previous cylinder life
- Permanent grease lubricant requires no additional lubrication during service



All Stainless Steel Repairable (Bell Ring)

The new "Blue and Improved" Original Line® All Stainless Steel Repairable cylinder is ideal for food processing, chemical, medical, pharmaceutical, offshore or marine equipment, energy production, or waste management applications. A bell ring design offers the benefit of full repairability without using hand tools by securing the body to the rod guide with a knurled, threaded nut.

- Bore sizes: 3/4", 1-1/16"
- Maximum Pressure Rating: 250 PSI
- Composite FDA approved rod bearing and FDA approved lubricant
- 304 stainless steel body
- 303 stainless steel end caps, piston rod, and bell ring nut
- Low friction Buna N "U" Cup seals and rod wiper



Stainless Steel Flat-1®

Stainless Steel Flat-1® Cylinders are designed specifically for applications that require compact cylinders that will be exposed to frequent, corrosive wash down as is common in a number of industries such as food and beverage, health and beauty, or medical applications.

- Bore Sizes: 9/16", 3/4", 1-1/16", 1-1/2", 2", 2-1/2", 3", 4"
- All Stainless Steel construction is highly corrosion resistant.
- Hard chrome plated stainless steel piston rod maximizes rod seal life
- IP69K rated design protects the cylinder from damage during wash down
- Minimal mounting holes present only where specified reduces catch points
- F Series Mounting Option provided a convenient mounting interchange to a popular competitive design.





Clean

Safe

Durable solutions

LDA – Industrial Food Grade Products

Vacuum Cups - Metal Detectable

Metal Detectable Cups have bits of metal embedded into the cup silicone material, used where contamination is a concern, such as in food processing. If pieces break off, they can be found with in-line metal detection equipment.

- FDA approved material for use in food processing
- Metal impregnated for detection in food processing
- 1.18" diameter flat model
- 1.57" or 1.65" diameter multi bellows
- Multi bellows accommodates variable work piece shapes



Vacuum Cups - Universal

Universal cups can handle flat or slightly curved surfaces.

- 0.2" to 2.05" diameter cups available
- Flat cups hold firm to smooth surfaces
- Available in silicone for high temperature applications
- Silicone cups are preferred for food processing applications
- Chloroprene cups provide excellent wear resistance
- Good for use in low temperature applications



Vacuum Cups - Ultra-Miniature

Ultra-Miniature Cups are ideal for use in picking up extremely small parts such as computer chips, Ultra-miniature cups may be used in laboratory and food processing environments.

- Replacement cups for vacuum pencil kit
- Available in 0.09" to 0.75" diameters
- ESD-safe silicone or Buna-N for handling electronics
- Silicone cups for use in food handling applications
- Silicone cups for high temperature applications
- Replacement cups for Vacuum pencil kit



Vacuum Cups - Egg

Egg Cups safely handle delicate, round objects such as eggs and ceramics and can be used in the food processing and fiber optic testing industries.

- Available in red and translucent silicone
- Great for food processing applications
- Large bellows ensure gentle handling of work piece
- 1.34" or 1.46" diameter
- 2.5 or 5.5 Convolutions accommodates egg size variation
- Works with VPIA inline venturi pump





Clean
Safe

Durable solutions

LDA – Industrial Food Grade Products

Variable Flow (Venturi) Vacuum Pumps

The VDF Series is a unique Vaccon innovation that places the vacuum port and exhaust path inline making a straight-through venturi vacuum pump. These compact pumps offer high flow rates up to 120 SCFM [3400 LPM] and high vacuum levels up to 25"Hg [847mbar].

Developed for extremely dirty and dusty environments such as foundries, refractory and bagging operations, VDF pumps don't clog, lose suction or require a vacuum filter.

Standard VDF pumps are field-adjustable allowing you to regulate the vacuum flow and vacuum level to meet your application requirements. This maximizes energy efficiency by consuming only the compressed air necessary to do the job. A pressure regulator is not required as the pump can be tuned to operate at any pressure above 50 PSI [3.5 bar].



INOXLIFT– stainless steel gas springs

Need protection against corrosion? We offer you springs made of SAE304 or SAE316L grade stainless steel for superior corrosion protection. It's the ideal corrosion fighter in wash down areas for the food and packaging industries as well as outdoor environments.

The "Inoxlift" type is the stainless steel made of, our most popular gas spring the "Lift". The most common applications are in the marine/ship building, on medical equipment, chemical and food industries with food grade lube). Basic extras such as various valve systems, protection tubes, special extension speed, special temperature range (up to -45°C or up to +200°C) and special damping are also available for Inoxlift gas springs.



Foam grippers

From standard to complete custom solutions, Joulin provides the right vacuum grippers for your application. Firstly designed for the lumber industries and now for more than 50 years, this type of grippers are used in a broad range of applications and industries. Rugged and not sensitive to dust or debris the foam gripper vitually grips everyting and don't require filters and are very low maintenance. For applications in direct contact with food there is FDA Compliant foam



New Series AMX of cylinders according to ISO 15552 standard in AISI 316L Stainless Steel.

The new cylinders according to **DIN ISO 15552 standard in AISI 316L Stainless Steel Series AMX** proposed by A.P.I. are available in bores from 32 mm to 200 mm, and are realized with round tube and external tie-rods, standard with adjustable cushionings and scraper ring in special polyurethane specially developed for the applications it is intended for.

These pneumatic cylinders are characterized by a **clean and tidy design, also in details**, as the mirror polishing. The front end cap is made in such a way that the sealing ring and the guide rail can be removed to an **easy replacement of the sealing if necessary also on board, to reduce maintenance time**.

The series is completed by the **ISO mounting accessories**, also fully realized in **Stainless Steel**.

The pneumatic cylinders of Series AMX are **designed and manufactured for the Food & Beverage, the chemical, the pharmaceutical and the medical industry**: the AISI 316L Stainless Steel they are made of, allows the use in **corrosive environments** and in general in all those applications **where it is essential to maintain the highest level of hygiene and cleaning**.

The **lubrication with synthetic food grade grease complies with FDA Directive section 21 CFR 178 (reg. NSF H1)** ensure low friction and a stable and durable lubricant layer, and at the same time provide a **completely eligibility for accidental contact with aliments**.



New Series of compact cylinders according to ISO 21287 standard in AISI 316L Stainless Steel.

The new **compact cylinders according to ISO 21287 standard in AISI 316L Stainless Steel** proposed by A.P.I. are available in bores from 25 mm to 100 mm, in the standard versions single acting magnetic (type CIXS), double acting magnetic (type CIX), and double acting magnetic anti-rotating (type CIXN).

This cylinder series has got interesting features that make it **flexible and complete**. A specific study has been devoted to the design, which thanks to the round tube and the external tie rods, is clean, modern and extremely tidy even in the smallest detail. Particular attention has also been given to the front end cap, which **does not have any external drains where impurities can lie down and settle**. All these elements, as well as the rod, are made of Stainless Steel AISI 316L.

The **lubrication with synthetic food grade grease complies with FDA Directive section 21 CFR 178 (reg. NSF H1)** ensure low friction and a stable and durable lubricant layer, and at the same time provide a **completely eligibility for accidental contact with aliments**.

These features makes the cylinders of this series **suitable for use in the Food&Beverage, in the chemical, pharmaceutical and medical industries**, and in general in all those applications where it is essential to **maintain the highest level of hygiene and cleaning, even in corrosive environments**.



A.P.I. presents its new Stainless Steel spool valves Series AX1.

The body and the end caps of these valves are manufactured in AISI 316L Stainless Steel, the spool in hard anodized aluminium, the distributors in Fortron 114L4 polymer, while the seals are in hydrogen nitrile butadiene rubber (HNBR).
On request all the elements of the valve are available in AISI 316L Stainless Steel (AXX) with FKM seals.

All the valves Series AX1 are **manufactured in accordance with ATEX 2014/34/EU Directive**, in 5 different classifications (including intrinsic safety Ex ia, encapsulated coil Ex dm, and encapsulated flameproof coil Ex db) and therefore can operate in potentially explosive environments.

These features make those pneumatic components good for **applications in the Food&Beverage, in the chemical pharmaceutical and medical sectors, but particularly suitable for Oil&Gas and Mining industry.**
mountable in any position.



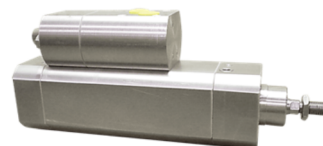
Corrosion-Resistant Plastic Rotary Actuator

- Constructed of PET and stainless steel materials for washdown environments
- Direct drop-in replacement for triangle check weigher rotaries
- Repairable



Food Grade Cylinder

- Complete stainless steel cylinder with stainless steel cover
- Valve attached to cylinder
- Stainless steel cover protects the valve from caustic washdown



Plastic Cylinder with Hollow Rod - ML310600

- Double hollow rod for vacuum
- Chrome-plated piston rod
- Light weight



Food Industry Modified MAC Valves

MAC Valves presents the only valves offered in the pneumatics industry specifically modified for food/washdown resistance for use in extreme applications to prevent internal and external moisture and other contaminants.

The patented Mac valve technology ensures reliable performance and long life. Mac Valves also offer a range of acetal bodied valves ideal for food applications due to their food grade materials and minimal bacteria harbour points.

The Mac Modification MOD 4922 (DM pilots) and MOD 7772 (PME pilots) are food/washdown resistant valves specifically modified and tested for extreme applications to prevent internal and external moisture and other contaminants.

The MOD 0650 is a DOW Corning FDA grease for pick & place applications

The patented Mac valve technology ensures reliable performance and long life.

Key modifications in the food/washdown resistant valves:

- Spool, D-seals and poppet made from special water-resistant compound.
- Dow 3452 'sticky' water resistant grease applied to valve and pilot body.
- All electrical connections (body to base, pilot to main valve) coated with Dow #4 silicone dielectric.
- Dow #510 silicone or solenoid assembly.
- Booted non-lock override.
- AC coils: 5.4-watt rated coils or higher to prevent sticking when contamination enters poppet.
- DOW Corning FDA grease





Clean

Safe

Durable solutions

Stainless steel filter & pressure regulators

A.P.I. Stainless Steel AISI316 Airline Equipment

Series of modular units in stainless steel AISI 316 suitable for industrial application like: food, medical, chemical, Oil & Gas and mining. Light weight and compact size for space saving, the air preparation units have the following standard features :

- For high pressure use, corrosion and chemical resistance;
- Good performance in chemical working environments and outdoor facility;
- Suitable for food, medical, chemical, off-shore and mining industry;
- Metallic parts meet NACE Standard MR-01-75;
- The product effectively removes water and particle;
- Accurate and sensitive pressure setting;
- Lubricator oil can be replenished without stopping air supply.

The modular units are supplied together with the bracket nuts and gauge always in stainless steel material.



99.99998% Effective inverse flow filtration removal and 0.01 Micron final filtration with washable first stage element



The Eliminer Stainless Steel Air Filter Units are made out of 316 stainless steel and protect properly all your equipment and delicate instruments from dirt, water and oil present in the pneumatic conduits.

The Eliminer units are available in a wide range of models including Eliminex, Eliminer, coalescing, oil extracting and combo.



www.LDA.be - LDA@LDA.be
+32(0)2- 266 13 13



Clean
Safe

Durable solutions

LDA – Industrial Food Grade Products

M&M solenoid valves are manufactured with high quality materials only to guarantee a durable performance as well as high reliability. They have a robust construction particularly suitable for industrial applications and offer the maximum compatibility with fluids thanks to a wide choice of seal materials. To be conform to the food industry the valves are equipped with FKM seals

Benefits of M&M International solenoid valves

- Robust construction for industrial applications → High reliability
- Featuring stainless steel orifice on most models → Long life
- Stainless steel operators with low residual magnetism → Corrosion resistant
- According to 1.4105 EN 10088 (AISI 430F) → High performance
- High quality seal materials → High compatibility with a wide range of media
NBR, FKM, EPDM, PTFE, Sigodur (filled PTFE), Ruby, Kalrez
- Fully interchangeable coils with a wide range of AC and DC voltages → High flexibility with reduced stock
- Coil orientation possible through 360° installation → Simple and quick



The Brad Ultra-Lock Stainless Steel Connection System enables fast and easy commissioning of machinery.

Simply push down to connect. Compared to hardwiring, the innovative, threadless, “push-to-lock” technology reduces ergonomic stress and delivers enormous labor time savings when installing and maintaining the control unit. Designed with one sealing surface, the connectors ensure optimum performance, even in harsh, wet environments.

The Ultra-Lock Stainless Steel Connection System was specially designed to meet the stringent standards of the food and beverage industry and to provide a highly reliable connection system.

Material Compatibility: High material compatibility with a multitude of wash-down chemicals used throughout the food and beverage industry.

IP69K Industrial Strength Seal: With its radial seal and the “push-to-lock” technology, the Ultra-Lock Stainless Steel Connection System is reliable and operator-independent. It creates a repeatable IP69K seal that can withstand washdowns up to 100 bar (1500 psi) with one push.



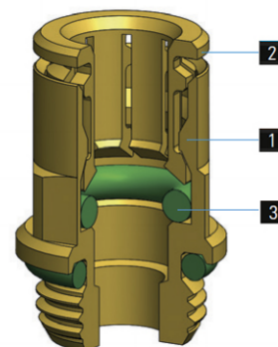
Push-in Fittings & tubing for Food and Beverage Applications

MF is C.matic's brand new push-to-connect fitting designed and certified for Food and Beverage applications. C.matic's MF fitting is made of brass with low lead content and it is NSF certified according to the 169 standards for contact with water, tea and coffee. This makes C.matic's MF fitting The Right Solution for the coffee and vending machines industry. On top of the 169 NSF/ANSI Certificate, the MF fitting boasts also the NSF/ANSI 372 brass compliance with the maximum lead content standards allowed for contact with drinking water (U.S. Safe Drinking Water Act).

1 > Body: Brass EN12164 CW510L Compliant NSF/ANSI 372 FDA Compliant FPM

2 > Gripping collet: Brass EN12164 CW510L Compliant NSF/ANSI 372 FDA Compliant FPM

3 > Seals: FDA Compliant FPM



www.LDA.be - LDA@LDA.be
+32(0)2- 266 13 13

FOODBOXER

FOODBOXER sanitary pumps are designed to be applied in food, brewing, pharmaceutical, and cosmetic industries.

FOODBOXER food-processing and sanitary pumps have dry self-priming capacity with considerable suction head, even if the pump is not full, fine tuning of speed without pressure loss, flow and head adjusting, and the possibility of sustained operation without overload and damage. In addition, a huge choice of construction materials allows selecting optimum chemical compatibility with the fluid and/or environment without neglecting the temperature range.

They are specially designed for demanding applications with high humidity or in potentially explosive environments (ATEX certification).

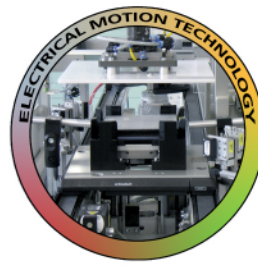
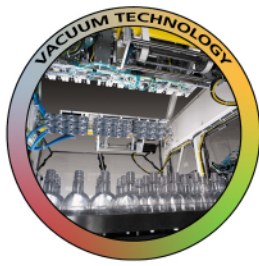
Food-processing pumps with a pneumatic drive are designed for pumping abrasive, sensitive to shift fluids and fluids with high viscosity. Excellent for pumping heavy and flowing fluids.

Flow rate is up to 900 l/min, head is up 80 m w.c.



MAIN FEATURES:

- available in PP (polypropylene), PVDF (polyvinylidenefluoride)/ECTFE (ethylenechlorotrifluoroethylene), Alu and AISI 316 (stainless steel);
- used in potentially-explosive environments (ATEX certification);
- suitable for severe conditions and high-humidity environments;
- dry operation is allowed;
- dry start up;
- the drive is the energy of compressed air without using any particles of lubricant;
- adjustable performance and operating suction head
- fine tuning of motor speed at constant pressure;
- double-manifold option (two inlet and two outlet openings);
- ground, wall or submersible installation;
- three inlet and three outlet manifolds;
- easy maintenance and parts replacement;
- excellent performance, price/quality ratio;



We look forward to your application.

LDA Belgium

Hoge Buizen 53
1980 Eppegem
Belgium

Tel. +32 (0)2-266 13 13

Mail: LDA@LDA.be

www.LDA.be